

Recombinant Human GDF2 protein, His-tagged

Cat. No. GDF2-38H Lot. No. (See product label)

SPECIFICATION

Product Overview	Recombinant Human GDF2 protein(Ser32~Gly427), fused with N-terminal His tag, was expressed in E.coli.
Species	Human
Source	E.coli
ProteinLength	Ser32~Gly427
Form	20mM Tris, 150mM NaCl, pH8.0, containing 0.01% SKL, 5% Trehalose.
Molecular Mass	48kDa
Endotoxin	<1.0EU per 1g (determined by the LAL method)
Purity	> 90%
Storage	Avoid repeated freeze/thaw cycles. Store at 2-8°C for one month. Aliquot and store at -80°C for 12 months.
Reconstitution	Reconstitute in 20mM Tris, 150mM NaCl (pH8.0) to a concentration of 0.1-1.0 mg/mL. Do not vortex.

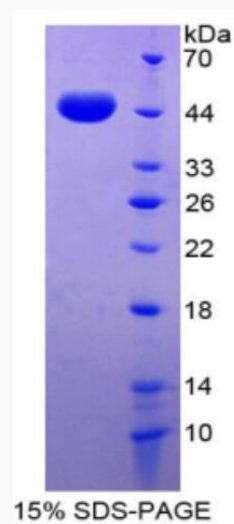
GENE INFORMATION

 Tel: 1-631-559-9269 1-516-512-3133

 Email: info@creative-biomart.com  Fax: 1-631-938-8127

 45-1 Ramsey Road, Shirley, NY 11967, USA

Gene Name	GDF2 growth differentiation factor 2 [Homo sapiens]
Official Symbol	GDF2
Synonyms	GDF2; growth differentiation factor 2; growth/differentiation factor 2; BMP 9; BMP9; GDF-2; bone morphogenetic protein 9; BMP-9
Gene ID	2658
mRNA Refseq	NM_016204
Protein Refseq	NP_057288
MIM	605120
UniProt ID	Q9UK05

SDS-PAGE


Tel: 1-631-559-9269 1-516-512-3133

Email: info@creative-biomart.com Fax: 1-631-938-8127

45-1 Ramsey Road, Shirley, NY 11967, USA