

Recombinant Human GDF5 Protein, GST-tagged

Cat. No. GDF5-4827H **Lot. No.** (See product label)

SPECIFICATION

Product Overview	Human GDF5 partial ORF (NP_000548.1, 28 a.a. - 127 a.a.) recombinant protein with GST tag at N-terminal.
Species	Human
Source	Wheat Germ
ProteinLength	28-127 a.a.
Description	<p>The protein encoded by this gene is a member of the bone morphogenetic protein (BMP) family and the TGF-beta superfamily. This group of proteins is characterized by a polybasic proteolytic processing site which is cleaved to produce a mature protein containing seven conserved cysteine residues. The members of this family are regulators of cell growth and differentiation in both embryonic and adult tissues. Mutations in this gene are associated with acromesomelic dysplasia, Hunter-Thompson type; brachydactyly, type C; and chondrodysplasia, Grebe type. These associations confirm that the gene product plays a role in skeletal development.</p> <p>[provided by RefSeq]</p>
Molecular Mass	36.63 kDa
AA Sequence	APDLGQRPQGTRPGLAKAEAKERPPLARNVFRPGGHSYGGGATNANARAKGGTG QTGGLTQPKKDEPKKLPPRPGGPEPKPGHPPQTRQATARTVTPKGQ
Applications	Enzyme-linked Immunoabsorbent Assay

 Tel: 1-631-559-9269 1-516-512-3133

 Email: info@creative-biomart.com  Fax: 1-631-938-8127

 45-1 Ramsey Road, Shirley, NY 11967, USA

Western Blot (Recombinant protein)
 Antibody Production
 Protein Array

Notes	Best use within three months from the date of receipt of this protein.
Storage	Store at -80 centigrade. Aliquot to avoid repeated freezing and thawing.
Storage Buffer	50 mM Tris-HCl, 10 mM reduced Glutathione, pH=8.0 in the elution buffer.

GENE INFORMATION

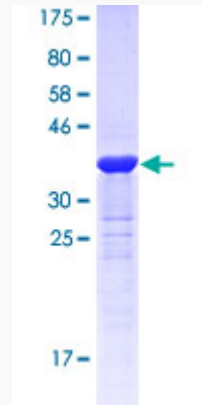
Gene Name	GDF5 growth differentiation factor 5 [Homo sapiens]
Official Symbol	GDF5
Synonyms	GDF5; growth differentiation factor 5; growth/differentiation factor 5; BMP14; cartilage derived morphogenetic protein 1; CDMP1; GDF-5; CDMP-1; radotermin; cartilage-derived morphogenetic protein-1; OS5; LAP4; SYNS2;
Gene ID	8200
mRNA Refseq	NM_000557
Protein Refseq	NP_000548
MIM	601146
UniProt ID	P43026

 Tel: 1-631-559-9269 1-516-512-3133

 Email: info@creative-biomart.com  Fax: 1-631-938-8127

 45-1 Ramsey Road, Shirley, NY 11967, USA

**Quality Control
Testing**



12.5% SDS-PAGE Stained with Coomassie Blue

 Tel: 1-631-559-9269 1-516-512-3133

 Email: info@creative-biomart.com  Fax: 1-631-938-8127

 45-1 Ramsey Road, Shirley, NY 11967, USA