

Recombinant Active Human GDF6 Protein, His-tagged(C-ter)

Cat. No. GDF6-106H **Lot. No.** (See product label)

SPECIFICATION

Product Overview	Recombinant Active Human GDF6 Protein with His tag (C-ter) was expressed in E. coli.
Species	Human
Source	E.coli
Description	This gene encodes a member of the bone morphogenetic protein (BMP) family and the TGF-beta superfamily of secreted signaling molecules. It is required for normal formation of some bones and joints in the limbs, skull, and axial skeleton. Mutations in this gene result in colobomata, which are congenital abnormalities in ocular development, and in Klippel-Feil syndrome (KFS), which is a congenital disorder of spinal segmentation. [provided by RefSeq, Jul 2008]
Form	Powder
Bio-activity	Determined by its ability to induce alkaline phosphatase production by ATDC5 cells. The ED50 for this effect is 63-240 ng/mL.
AA Sequence	MTAFASRHGKRHGKKSRLRCSKKPLHVNFKELGWDDWIIAPLEYEAYHCEGVCDFP LRSHLEPTNHAIQTLMNSMDPGSTPPSCCVPTKLTPI SILYIDAGNNVVYKQYEDMV VESCGCR
Endotoxin	Endotoxin level is less than 0.1 EU/μg of the protein, as determined by the LAL test.

 Tel: 1-631-559-9269 1-516-512-3133

 Email: info@creative-biomart.com  Fax: 1-631-938-8127

 45-1 Ramsey Road, Shirley, NY 11967, USA

Purity	> 98% (by SDS-PAGE)
Applications	SDS-PAGE
Notes	For laboratory research only, not for drug, diagnostic or other use.
Storage	Lyophilized protein should be stored at -20°C. After reconstitution, aliquot and store at -20°C or -80°C for up to one month. Storage in frost free freezers is not recommended. Avoid repeated freeze/thaw cycles. Suggest spin the vial prior to opening.
Storage Buffer	20 mM Sodium citrate (pH 3.5) and 0.2 M NaCl.
Reconstitution	It is recommended to reconstitute the lyophilized protein in sterile water to a concentration not less than 100 µg/mL and incubate the stock solution for at least 20 min at room temperature to make sure the protein is dissolved completely.

GENE INFORMATION

Gene Name	GDF6 growth differentiation factor 6 [Homo sapiens]
Official Symbol	GDF6
Synonyms	GDF6; growth differentiation factor 6; growth/differentiation factor 6; BMP13; GDF-6; Klippel-Feil syndrome; Klip-Feil malformation; Klippel-Feil malformation; growth/differentiation factor 16; KFM; KFS; KFS1; KFSL; SGM1; CDMP2; MCOP4; SCDO4; MCOPCB6; MGC158100; MGC158101;
Gene ID	392255
mRNA Refseq	NM_001001557

 Tel: 1-631-559-9269 1-516-512-3133

 Email: info@creative-biomart.com  Fax: 1-631-938-8127

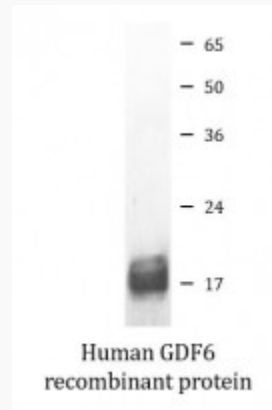
 45-1 Ramsey Road, Shirley, NY 11967, USA

Protein Refseq NP_001001557

MIM 601147

UniProt ID Q6KF10

SDS-PAGE



 Tel: 1-631-559-9269 1-516-512-3133

 Email: info@creative-biomart.com  Fax: 1-631-938-8127

 45-1 Ramsey Road, Shirley, NY 11967, USA