

Active Recombinant Human GDF6 Protein (Thr336-Arg455), C-His tagged, Animal-free, Carrier-free

Cat. No. GDF6-188H Lot. No. (See product label)

SPECIFICATION

Product Overview	Recombinant Human GDF6 Protein (Thr336-Arg455) with C-His tag was expressed in E. coli and Animal-free as well as Carrier-free.
Species	Human
Source	E.coli
ProteinLength	Thr336-Arg455
Description	Bone Morphogenetic Protein-13 (BMP-13), known as Growth differentiation factor 6 (GDF6), is an extracellular multifunctional cytokine that is also a member of the TGFβ family. BMP-13 can bind with the TGFβ receptor and induce SMAD protein signal transduction. BMP-13 is a regulatory protein that can affect the growth and differentiation of developing embryos. Moreover, it plays a role in regulating the patterning of the ectoderm and controlling eye development.
Form	Lyophilized
Bio-activity	Measure by its ability to induce alkaline phosphatase production by ATDC5 cells. The ED50 for this effect is 63-240 ng/mL.
Molecular Mass	The protein has a calculated MW of 14.50 kDa. The protein migrates as 17 kDa under reducing condition (SDS-PAGE analysis).

 Tel: 1-631-559-9269 1-516-512-3133

 Email: info@creative-biomart.com  Fax: 1-631-938-8127

 45-1 Ramsey Road, Shirley, NY 11967, USA

Endotoxin	< 0.1 EU/μg of the protein by the LAL method.
Purity	>98% as determined by SDS-PAGE analysis.
Storage	This product is stable after storage at: -20 centigrade for 12 months in lyophilized state from date of receipt. -20 or -80 centigrade for 2 weeks under sterile conditions after reconstitution. Avoid repeated freeze/thaw cycles.
Storage Buffer	Lyophilized from a 0.2 μm filtered solution containing 20 mM sodium citrate and 0.2 M NaCl, pH 3.5.
Reconstitution	It is recommended to reconstitute the lyophilized protein in 4 mM HCl to a concentration not less than 200 μg/mL and incubate the stock solution for at least 20 min to ensure sufficient re-dissolved.
Shipping	The product is shipped with polar packs. Upon receipt, store it immediately at -20 centigrade or lower for long term storage.

GENE INFORMATION

Gene Name	GDF6 growth differentiation factor 6 [Homo sapiens (human)]
Official Symbol	GDF6
Synonyms	GDF6; growth differentiation factor 6; growth/differentiation factor 6; BMP13; GDF-6; Klippel-Feil syndrome; Klip-Feil malformation; Klippel-Feil malformation; growth/differentiation factor 16; KFM; KFS; KFS1; KFSL; SGM1; CDMP2; MCOP4; SCDO4; MCOPCB6; MGC158100; MGC158101;
Gene ID	392255

 Tel: 1-631-559-9269 1-516-512-3133

 Email: info@creative-biomart.com  Fax: 1-631-938-8127

 45-1 Ramsey Road, Shirley, NY 11967, USA

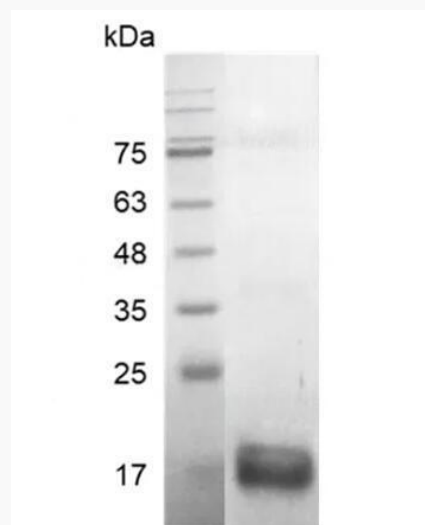
mRNA Refseq [NM_001001557](#)

Protein Refseq [NP_001001557](#)

MIM [601147](#)

UniProt ID [Q6KF10](#)

**SDS-PAGE analysis
of recombinant
human BMP-13.**

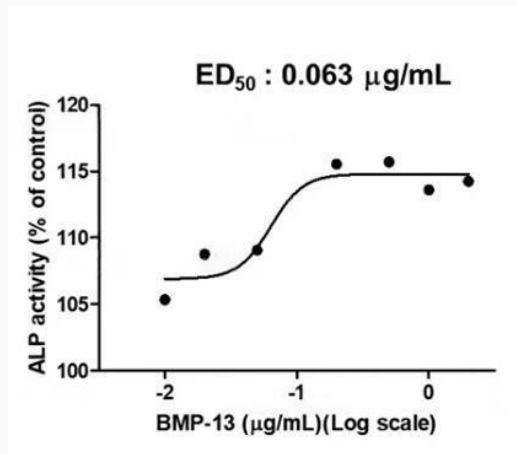


 Tel: 1-631-559-9269 1-516-512-3133

 Email: info@creative-biomart.com  Fax: 1-631-938-8127

 45-1 Ramsey Road, Shirley, NY 11967, USA

Activity



Human BMP-13, His Tag, E. coli (LDG111PHE) induced alkaline phosphatase production by ATDC5 cells, with the ED₅₀ at 63 ng/mL.

 Tel: 1-631-559-9269 1-516-512-3133

 Email: info@creative-biomart.com  Fax: 1-631-938-8127

 45-1 Ramsey Road, Shirley, NY 11967, USA