

Recombinant Active Human GDF7 Protein, His-tagged(C-ter)

Cat. No. GDF7-107H Lot. No. (See product label)

SPECIFICATION

Product Overview	Recombinant Active Human GDF7 Protein with His tag (C-ter) was expressed in E. coli.
Species	Human
Source	E.coli
Description	This gene encodes a member of the bone morphogenetic protein (BMP) family. BMPs belong to the transforming growth factor-beta superfamily of secreted signalling molecules that regulate diverse processes in growth, repair and embryonic development. In mouse, this gene functions as an inductive signal from the roof plate required for the specification of neuronal identity in the dorsal spinal cord. [provided by RefSeq, Jul 2008]
Form	Powder
Bio-activity	Determined by its ability to induce alkaline phosphatase production by ATDC5 cells. The ED50 for this effect is < 112 ng/mL.
AA Sequence	MTALAGTRTAQGSGGGAGRGRHRRGRSRCSRKPLHVDFKELGWDDWIIAPLDYEA YHCEGLCDFPLRSHLEPTNHAIQTLNLSMAPDAAPASCCVPARLSPISILYIDAANNV VYKQYEDMVVEACGCR
Endotoxin	Endotoxin level is less than 0.1 EU/μg of the protein, as determined by the LAL test.

 Tel: 1-631-559-9269 1-516-512-3133

 Email: info@creative-biomart.com  Fax: 1-631-938-8127

 45-1 Ramsey Road, Shirley, NY 11967, USA

Purity	> 98% (by SDS-PAGE)
Applications	SDS-PAGE
Notes	For laboratory research only, not for drug, diagnostic or other use.
Storage	Lyophilized protein should be stored at -20°C. After reconstitution, aliquot and store at -20°C or -80°C for up to one month. Storage in frost free freezers is not recommended. Avoid repeated freeze/thaw cycles. Suggest spin the vial prior to opening.
Storage Buffer	20 mM Sodium citrate (pH 3.5) and 0.2 M NaCl.
Reconstitution	It is recommended to reconstitute the lyophilized protein in sterile water to a concentration not less than 100 µg/mL and incubate the stock solution for at least 20 min at room temperature to make sure the protein is dissolved completely.

GENE INFORMATION

Gene Name	GDF7 growth differentiation factor 7 [Homo sapiens]
Official Symbol	GDF7
Synonyms	GDF7; growth differentiation factor 7; growth/differentiation factor 7; BMP12; GDF-7;
Gene ID	151449
mRNA Refseq	NM_182828
Protein Refseq	NP_878248

 Tel: 1-631-559-9269 1-516-512-3133

 Email: info@creative-biomart.com  Fax: 1-631-938-8127

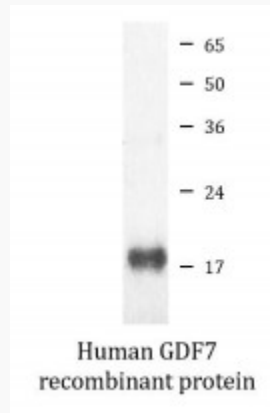
 45-1 Ramsey Road, Shirley, NY 11967, USA



MIM 604651

UniProt ID Q7Z4P5

SDS-PAGE



Tel: 1-631-559-9269 1-516-512-3133

Email: info@creative-biomart.com Fax: 1-631-938-8127

45-1 Ramsey Road, Shirley, NY 11967, USA