

Recombinant Human GDF7 Protein, GST-tagged

Cat. No. GDF7-4828H Lot. No. (See product label)

SPECIFICATION

Product Overview	Human GDF7 partial ORF (NP_878248, 361 a.a. - 450 a.a.) recombinant protein with GST-tag at N-terminal.
Species	Human
Source	Wheat Germ
Description	This gene encodes a member of the bone morphogenetic protein (BMP) family. BMPs belong to the transforming growth factor-beta superfamily of secreted signalling molecules that regulate diverse processes in growth, repair and embryonic development. In mouse, this gene functions as an inductive signal from the roof plate required for the specification of neuronal identity in the dorsal spinal cord. [provided by RefSeq]
Molecular Mass	35.64 kDa
AA Sequence	LGWDDWIIAPLDYEAYHCEGLCDFPLRSHLEPTNHAIQTLNLSMAPDAAPASCCVP ARLSPISILYIDAANNVYKQYEDMVVEACGCR
Applications	Enzyme-linked Immunoabsorbent Assay Western Blot (Recombinant protein) Antibody Production Protein Array
Notes	Best use within three months from the date of receipt of this protein.

 Tel: 1-631-559-9269 1-516-512-3133

 Email: info@creative-biomart.com  Fax: 1-631-938-8127

 45-1 Ramsey Road, Shirley, NY 11967, USA

Storage Store at -80 centigrade. Aliquot to avoid repeated freezing and thawing.

Storage Buffer 50 mM Tris-HCl, 10 mM reduced Glutathione, pH=8.0 in the elution buffer.

GENE INFORMATION

Gene Name GDF7 growth differentiation factor 7 [Homo sapiens]

Official Symbol GDF7

Synonyms GDF7; growth differentiation factor 7; growth/differentiation factor 7; BMP12; GDF-7;

Gene ID 151449

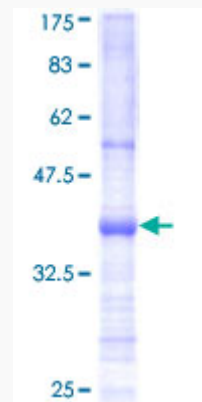
mRNA Refseq NM_182828

Protein Refseq NP_878248

MIM 604651

UniProt ID Q7Z4P5

Quality Control Testing



 Tel: 1-631-559-9269 1-516-512-3133

 Email: info@creative-biomart.com  Fax: 1-631-938-8127

 45-1 Ramsey Road, Shirley, NY 11967, USA



12.5% SDS-PAGE Stained with Coomassie Blue.

 Tel: 1-631-559-9269 1-516-512-3133

 Email: info@creative-biomart.com  Fax: 1-631-938-8127

 45-1 Ramsey Road, Shirley, NY 11967, USA