

# Recombinant Full Length Human GDI1 Protein, C-Flag-tagged

Cat. No. GDI1-1212HFL Lot. No. (See product label)

## SPECIFICATION

<b>Product Overview</b>	Recombinant Full Length Human GDI1 Protein, fused to Flag-tag at C-terminus, was expressed in Mammalian cells.
<b>Species</b>	Human
<b>Source</b>	Mammalian Cells
<b>ProteinLength</b>	1-447 aa
<b>Description</b>	GDP dissociation inhibitors are proteins that regulate the GDP-GTP exchange reaction of members of the rab family, small GTP-binding proteins of the ras superfamily, that are involved in vesicular trafficking of molecules between cellular organelles. GDIs slow the rate of dissociation of GDP from rab proteins and release GDP from membrane-bound rabs. GDI1 is expressed primarily in neural and sensory tissues. Mutations in GDI1 have been linked to X-linked nonspecific cognitive disability.
<b>Form</b>	25 mM Tris HCl, pH 7.3, 100 mM glycine, 10% glycerol.
<b>Molecular Mass</b>	50.4 kDa
<b>AA Sequence</b>	MDEEYDVIVLGTGLTECILSGIMSVNGKKVLHMDRNPYYGGESSITPLEELYKRFQL LEGPPEMGRGR DWNVDLIPKFLMANGQLVKMLLYTEVTRYLDFKVVVEGSFVYKG GKIYKVPSTETEALASNLGMFEKRRF RKFLVFVANFDENDPKTFEGVDPQTTSMR DVYRKFDLGGQDVIDFTGHALALYRTDDYLDQPCLETVNRK LYSESLARYGKSPYLY

 Tel: 1-631-559-9269 1-516-512-3133

 Email: [info@creative-biomart.com](mailto:info@creative-biomart.com)  Fax: 1-631-938-8127

 45-1 Ramsey Road, Shirley, NY 11967, USA

PLYGLGELPQQGFARLSAIYGGTYMLNKPVDDIIMENGKVVGKSEGEVARCKQL ICD  
 PSYIPDRVRKAGQVIRIICILSHPIKNTNDANSCQIIPQNQVNRKSDIYVCMISYAHNVA  
 AQGKYI AIASTTVETTDPEKEVEPALELLEPIDQKFVAISDLYEPIDDGCESQVFCSCS  
 YDATTHFETTCNDIKDI  
 YKRMAGTAFDFENMKRKQNDVFGAEQTRTRPLEQKLISEEDLAANDILDYKDDDD  
 KV

<b>Purity</b>	> 80% as determined by SDS-PAGE and Coomassie blue staining.
<b>Stability</b>	Stable for 12 months from the date of receipt of the product under proper storage and handling conditions. Avoid repeated freeze-thaw cycles.
<b>Storage</b>	Store at -80 centigrade.
<b>Concentration</b>	>50 ug/mL as determined by microplate BCA method.
<b>Preparation</b>	Recombinant protein was captured through anti-DDK affinity column followed by conventional chromatography steps.
<b>Protein Families</b>	Druggable Genome
<b>Full Length</b>	Full L.

## GENE INFORMATION

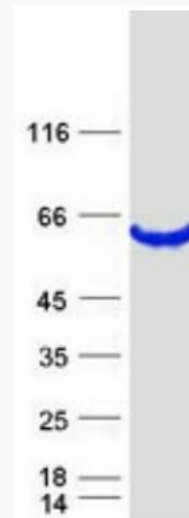
<b>Gene Name</b>	GDI1 GDP dissociation inhibitor 1 [ Homo sapiens (human) ]
<b>Official Symbol</b>	GDI1
<b>Synonyms</b>	1A; GDIL; MRX41; MRX48; OPHN2; XAP-4; XLID41; RABGD1A; RABGDIA

 Tel: 1-631-559-9269 1-516-512-3133

 Email: [info@creative-biomart.com](mailto:info@creative-biomart.com)  Fax: 1-631-938-8127

 45-1 Ramsey Road, Shirley, NY 11967, USA

Gene ID	2664
mRNA Refseq	NM_001493.3
Protein Refseq	NP_001484.1
MIM	300104
UniProt ID	P31150



Coomassie blue staining of purified GD11 protein.

 Tel: 1-631-559-9269 1-516-512-3133

 Email: [info@creative-biomart.com](mailto:info@creative-biomart.com)  Fax: 1-631-938-8127

 45-1 Ramsey Road, Shirley, NY 11967, USA