

## Recombinant Active Human GDNF Protein, His-tagged(C-ter)

Cat. No. GDNF-108H Lot. No. (See product label)

### SPECIFICATION

<b>Product Overview</b>	Recombinant Active Human GDNF Protein with His tag (C-ter) was expressed in E. coli.
<b>Species</b>	Human
<b>Source</b>	E.coli
<b>Description</b>	This gene encodes a highly conserved neurotrophic factor. The recombinant form of this protein was shown to promote the survival and differentiation of dopaminergic neurons in culture, and was able to prevent apoptosis of motor neurons induced by axotomy. The encoded protein is processed to a mature secreted form that exists as a homodimer. The mature form of the protein is a ligand for the product of the RET (rearranged during transfection) protooncogene. Multiple transcript variants encoding different isoforms have been found for this gene. Mutations in this gene may be associated with Hirschsprung disease. [provided by RefSeq, Jun 2010]
<b>Form</b>	Powder
<b>Bio-activity</b>	Determined by its ability to induce proliferation in SH-SY5Y cells. The ED50 for this effect is < 10 ng/mL.
<b>AA Sequence</b>	MSPDKQMAVLPRRERNRQAAAANPENSRGKGRRGQRGKNRGCVLTAIHLNVTDL GLGYETKEELIFRYCSGSCDAAETTYDKILKNLSRNRRLVSDKVGQACCRPIAFDDD LSFLDDNLVYHILRKHSKRKCGCI

 Tel: 1-631-559-9269 1-516-512-3133

 Email: [info@creative-biomart.com](mailto:info@creative-biomart.com)  Fax: 1-631-938-8127

 45-1 Ramsey Road, Shirley, NY 11967, USA

<b>Endotoxin</b>	Endotoxin level is less than 0.1 EU/μg of the protein, as determined by the LAL test.
<b>Purity</b>	> 95% (by SDS-PAGE)
<b>Applications</b>	SDS-PAGE
<b>Notes</b>	For laboratory research only, not for drug, diagnostic or other use.
<b>Storage</b>	Lyophilized protein should be stored at -20°C. After reconstitution, aliquot and store at -20°C or -80°C for up to one month. Storage in frost free freezers is not recommended. Avoid repeated freeze/thaw cycles. Suggest spin the vial prior to opening.
<b>Storage Buffer</b>	20 mM Sodium citrate (pH 3.5) and 0.2 M NaCl.
<b>Reconstitution</b>	It is recommended to reconstitute the lyophilized protein in sterile water to a concentration not less than 100 μg/mL and incubate the stock solution for at least 20 min at room temperature to make sure the protein is dissolved completely.

## GENE INFORMATION

<b>Gene Name</b>	GDNF glial cell derived neurotrophic factor [ Homo sapiens ]
<b>Official Symbol</b>	GDNF
<b>Synonyms</b>	GDNF; glial cell derived neurotrophic factor; glial cell line-derived neurotrophic factor; astrocyte derived trophic factor; ATF1; ATF2; glial cell line derived neurotrophic factor; glial derived neurotrophic factor; HFB1 GDNF; ATF; astrocyte-derived trophic factor; HSCR3; HFB1-GDNF;
<b>Gene ID</b>	2668

 Tel: 1-631-559-9269 1-516-512-3133

 Email: [info@creative-biomart.com](mailto:info@creative-biomart.com)  Fax: 1-631-938-8127

 45-1 Ramsey Road, Shirley, NY 11967, USA

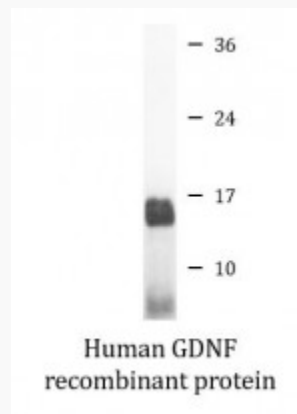
mRNA Refseq [NM\\_000514](#)

Protein Refseq [NP\\_000505](#)

MIM [600837](#)

UniProt ID [P39905](#)

#### SDS-PAGE



 Tel: 1-631-559-9269 1-516-512-3133

 Email: [info@creative-biomart.com](mailto:info@creative-biomart.com)  Fax: 1-631-938-8127

 45-1 Ramsey Road, Shirley, NY 11967, USA