

## Active Recombinant Human GDNF Protein (Ser78-Ile211), C-His tagged, Animal-free, Carrier-free

Cat. No. GDNF-120H Lot. No. (See product label)

### SPECIFICATION

<b>Product Overview</b>	Recombinant Human GDNF Protein (Ser78-Ile211) with C-His tag was expressed in E. coli and Animal-free as well as Carrier-free.
<b>Species</b>	Human
<b>Source</b>	E.coli
<b>ProteinLength</b>	Ser78-Ile211
<b>Description</b>	Glial cell line-derived neurotrophic factor (GDNF) is the neurotrophic factor, belonging to the GDNF family of ligands (GFL) and identifying as a therapeutic candidate in Parkinson's disease. GDNF is a 23.7 kDa protein containing 211 residues that plays a critical role in promoting the survival and differentiation of midbrain dopamine neurons. Besides, GDNF is revealed to facilitate the development of peripheral tissues such as kidney, pancreas and lung. Additionally, as a member of GFL, GDNF also takes part in the progression of tumor.
<b>Form</b>	Lyophilized
<b>Bio-activity</b>	Measure by its ability to induce proliferation in SH-SY5Y cells. The ED50 for this effect is < 10 ng/mL.
<b>Molecular Mass</b>	The protein has a calculated MW of 16.01 kDa. The protein migrates as 16 kDa under reducing condition (SDS-PAGE analysis).

 Tel: 1-631-559-9269 1-516-512-3133

 Email: [info@creative-biomart.com](mailto:info@creative-biomart.com)  Fax: 1-631-938-8127

 45-1 Ramsey Road, Shirley, NY 11967, USA

<b>Endotoxin</b>	< 0.1 EU/μg of the protein by the LAL method.
<b>Purity</b>	>95% as determined by SDS-PAGE analysis.
<b>Storage</b>	This product is stable after storage at: -20 centigrade for 12 months in lyophilized state from date of receipt. -20 or -80 centigrade for 1 month under sterile conditions after reconstitution. Avoid repeated freeze/thaw cycles.
<b>Storage Buffer</b>	Lyophilized from a 0.2 μm filtered solution containing 20 mM sodium citrate and 0.2 M NaCl, pH 3.5.
<b>Reconstitution</b>	It is recommended to reconstitute the lyophilized protein in sterile H <sub>2</sub> O to a concentration not less than 200 μg/mL and incubate the stock solution for at least 20 min to ensure sufficient re-dissolved.
<b>Shipping</b>	The product is shipped with polar packs. Upon receipt, store it immediately at -20 centigrade or lower for long term storage.

## GENE INFORMATION

<b>Gene Name</b>	GDNF glial cell derived neurotrophic factor [ Homo sapiens (human) ]
<b>Official Symbol</b>	GDNF
<b>Synonyms</b>	GDNF; glial cell derived neurotrophic factor; glial cell line-derived neurotrophic factor; astrocyte derived trophic factor; ATF1; ATF2; glial cell line derived neurotrophic factor; glial derived neurotrophic factor; HFB1 GDNF; ATF; astrocyte-derived trophic factor; HSCR3; HFB1-GDNF;
<b>Gene ID</b>	2668

 Tel: 1-631-559-9269 1-516-512-3133

 Email: [info@creative-biomart.com](mailto:info@creative-biomart.com)  Fax: 1-631-938-8127

 45-1 Ramsey Road, Shirley, NY 11967, USA

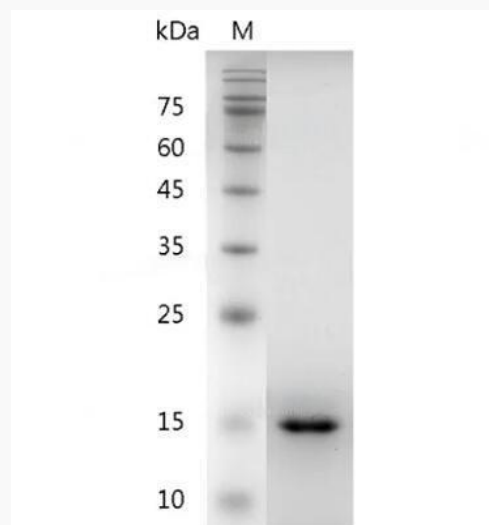
mRNA Refseq [NM\\_000514](#)

Protein Refseq [NP\\_000505](#)

MIM [600837](#)

UniProt ID [P39905](#)

**SDS-PAGE analysis  
of recombinant  
human GDNF.**



 Tel: 1-631-559-9269 1-516-512-3133

 Email: [info@creative-biomart.com](mailto:info@creative-biomart.com)  Fax: 1-631-938-8127

 45-1 Ramsey Road, Shirley, NY 11967, USA