

## Recombinant Human GDNF Protein (Ser78-Gly107), N-His and N-SUMO tagged

Cat. No. GDNF-2437H Lot. No. (See product label)

### SPECIFICATION

<b>Product Overview</b>	Recombinant human GDNF (Ser78-Gly107) protein fused with the N-His & N-SUMO tag was expressed in E. coli.
<b>Species</b>	Human
<b>Source</b>	E.coli
<b>ProteinLength</b>	Ser78-Gly107
<b>Molecular Mass</b>	17.77 kDa
<b>Purity</b>	>90 % as determined by SDS-PAGE.
<b>Notes</b>	For research use only.
<b>Storage</b>	Use a manual defrost freezer and avoid repeated freeze thaw cycles. Store at 2 to 8 centigrade for one week. Store at -20 to -80 centigrade for twelve months from the date of receipt.
<b>Storage Buffer</b>	0.01M PBS, pH 7.4, 0.02 % NLS
<b>Reconstitution</b>	Reconstitute in sterile water for a stock solution.
<b>Shipping</b>	In general, proteins are provided as lyophilized powder/frozen liquid. They are

 Tel: 1-631-559-9269 1-516-512-3133

 Email: [info@creative-biomart.com](mailto:info@creative-biomart.com)  Fax: 1-631-938-8127

 45-1 Ramsey Road, Shirley, NY 11967, USA

shipped out with dry ice/blue ice unless customers require otherwise.

## GENE INFORMATION

**Gene Name** GDNF glial cell derived neurotrophic factor [ Homo sapiens (human) ]

**Official Symbol** GDNF

**Synonyms** GDNF; glial cell derived neurotrophic factor; glial cell line-derived neurotrophic factor; astrocyte derived trophic factor; ATF1; ATF2; glial cell line derived neurotrophic factor; glial derived neurotrophic factor; HFB1 GDNF; ATF; astrocyte-derived trophic factor; HSCR3; HFB1-GDNF;

**Gene ID** 2668

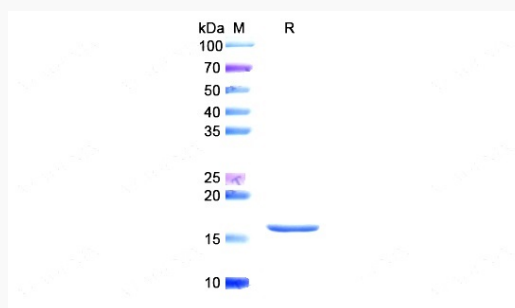
**mRNA Refseq** NM\_000514

**Protein Refseq** NP\_000505

**MIM** 600837

**UniProt ID** P39905

### SDS-PAGE



Tel: 1-631-559-9269 1-516-512-3133

Email: [info@creative-biomart.com](mailto:info@creative-biomart.com) Fax: 1-631-938-8127

45-1 Ramsey Road, Shirley, NY 11967, USA