

Active Recombinant Human GDNF protein

Cat. No. GDNF-338H Lot. No. (See product label)

SPECIFICATION

Product Overview	Active Recombinant Human GDNF protein(P39905-2) (Arg 83-Ile 185) was expressed and purified in HEK293, with additional two aa (Gly& Pro) at the N-terminus.
Species	Human
Source	HEK293
ProteinLength	83-185 aa
Form	Lyophilized from sterile PBS, pH 7.4.
Bio-activity	1. Measured in a cell proliferation assay using SHSY5Y human neuroblastoma cells. The ED50 for this effect is typically 3-15 ng/mL in the presence of Recombinant Human GFR alpha-1/GDNF R alpha-1 His Chimera. 2. Measured by its ability to bind biotinylated Human GFRa1-His in functional ELISA.
Molecular Mass	The recombinant human GDNF consists of 105 amino acids and predicts a molecular mass of 15.1 KDa. It migrates as approximately 18 KDa band in SDS-PAGE under reducing conditions.
Endotoxin	< 1.0 EU per µg protein as determined by the LAL method.
Purity	> 97 % as determined by SDS-PAGE
Storage	Store it under sterile conditions at -20°C to -80°C upon receiving. Recommend to

 Tel: 1-631-559-9269 1-516-512-3133

 Email: info@creative-biomart.com  Fax: 1-631-938-8127

 45-1 Ramsey Road, Shirley, NY 11967, USA

aliquot the protein into smaller quantities for optimal storage. Avoid repeated freeze-thaw cycles.

Reconstitution

It is recommended that sterile water be added to the vial to prepare a stock solution of 0.2 ug/ul. Centrifuge the vial at 4°C before opening to recover the entire contents.

GENE INFORMATION

Gene Name [GDNF glial cell derived neurotrophic factor \[Homo sapiens \]](#)

Official Symbol [GDNF](#)

Synonyms

GDNF; glial cell derived neurotrophic factor; glial cell line-derived neurotrophic factor; astrocyte derived trophic factor; ATF1; ATF2; glial cell line derived neurotrophic factor; glial derived neurotrophic factor; HFB1 GDNF; ATF; astrocyte-derived trophic factor; HSCR3; HFB1-GDNF;

Gene ID [2668](#)

mRNA Refseq [NM_000514](#)

Protein Refseq [NP_000505](#)

MIM [600837](#)

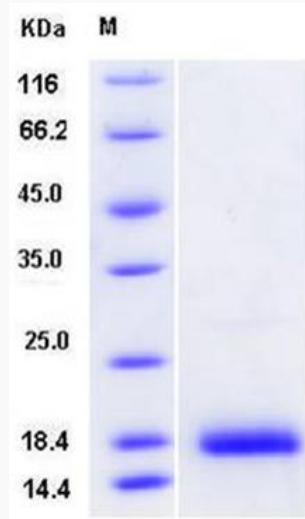
UniProt ID [P39905](#)

 Tel: 1-631-559-9269 1-516-512-3133

 Email: info@creative-biomart.com  Fax: 1-631-938-8127

 45-1 Ramsey Road, Shirley, NY 11967, USA

SDS-PAGE



 Tel: 1-631-559-9269 1-516-512-3133

 Email: info@creative-biomart.com  Fax: 1-631-938-8127

 45-1 Ramsey Road, Shirley, NY 11967, USA