

Recombinant Human GDPD1 Protein, Myc/DDK-tagged, C13 and N15-labeled

Cat. No. GDPD1-4532H **Lot. No.** (See product label)

SPECIFICATION

Product Overview	GDPD1 MS Standard C13 and N15-labeled recombinant protein (NP_872375) with a C-terminal MYC/DDK tag, was expressed in HEK293 cells.
Species	Human
Source	HEK293
Description	This gene encodes a member of the glycerophosphodiester phosphodiesterase family of enzymes that catalyze the hydrolysis of deacylated glycerophospholipids to glycerol phosphate and alcohol. The encoded protein is localized to the cytoplasm and concentrates near the perinuclear region. Alternative splicing results in multiple transcript variants.
Molecular Mass	36 kDa
AA Sequence	MSSTAAFYLLSTLGGYLVTSFLLLKYPTLLHQRKKQRFLSKHISHRGGAGENLENTM AAFQHAVKIGTDTLELDCHITKDEQVVVSHDENLKRATGVNVNISDLKYCELPPYLK LDVSFQRACQCEGKDNRIPLLKEVFEAFPNTPINIDIKVNNNVLIKKVSELVKRYNREH LTVWGNANYEIVEKCYKENS DIPILFSLQRVLLILGLFFTGLLPFVPIREQFFEIPMPSII LKLKEPHTMSRSQKFLIWLSDLLLMRKALFDHLTARGIQVYIWLNEEQEYKRAFDLG ATGVMTDYPTKLRDFLHNFSATRTRPLEQKLISEEDLAANDILDYKDDDDKV
Purity	> 80% as determined by SDS-PAGE and Coomassie blue staining

 Tel: 1-631-559-9269 1-516-512-3133

 Email: info@creative-biomart.com  Fax: 1-631-938-8127

 45-1 Ramsey Road, Shirley, NY 11967, USA

Stability	Stable for 3 months from receipt of products under proper storage and handling conditions.
Storage	Store at -80 centigrade. Avoid repeated freeze-thaw cycles.
Concentration	50 µg/mL as determined by BCA
Storage Buffer	100 mM glycine, 25 mM Tris-HCl, pH 7.3.

GENE INFORMATION

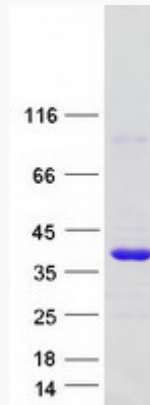
Gene Name	GDPD1 glycerophosphodiester phosphodiesterase domain containing 1 [Homo sapiens (human)]
Official Symbol	GDPD1
Synonyms	GDPD1; glycerophosphodiester phosphodiesterase domain containing 1; GDE4; lysophospholipase D GDPD1; glycerophosphodiester phosphodiesterase 4; glycerophosphodiester phosphodiesterase domain-containing protein 1; EC 3.1.4.39
Gene ID	284161
mRNA Refseq	NM_182569
Protein Refseq	NP_872375
MIM	616317
UniProt ID	Q8N9F7

 Tel: 1-631-559-9269 1-516-512-3133

 Email: info@creative-biomart.com  Fax: 1-631-938-8127

 45-1 Ramsey Road, Shirley, NY 11967, USA

SDS-PAGE



 Tel: 1-631-559-9269 1-516-512-3133

 Email: info@creative-biomart.com  Fax: 1-631-938-8127

 45-1 Ramsey Road, Shirley, NY 11967, USA