

## Recombinant Human GDPD1 Protein, GST-tagged

Cat. No. GDPD1-4837H Lot. No. (See product label)

### SPECIFICATION

<b>Product Overview</b>	Human GDPD1 full-length ORF ( AAH34432.1, 1 a.a. - 290 a.a.) recombinant protein with GST-tag at N-terminal.
<b>Species</b>	Human
<b>Source</b>	Wheat Germ
<b>Description</b>	This gene encodes a member of the glycerophosphodiester phosphodiesterase family of enzymes that catalyze the hydrolysis of deacylated glycerophospholipids to glycerol phosphate and alcohol. The encoded protein is localized to the cytoplasm and concentrates near the perinuclear region. Alternative splicing results in multiple transcript variants. [provided by RefSeq]
<b>Molecular Mass</b>	59.8 kDa
<b>AA Sequence</b>	MSSTAAFYLLSTLGGYLVTSFLLKYP TLLHQRKKQRFLSKHISHRGGAGENLENTM AAFQHAVKIGTDMLELDCHITKDEQVVVSHDENLKRATGVNVNISDLKYCELPYLG KLDVSFQRACQCEGKDNRIPLLKEVFEAFPNTPINIDIKVNNNVLIKKSELVKRYNRE HLTVWGNANYEIVEKCYKENS DIPILFSLQRVLLILGLFFTGLLPFVPIREQFFEIPMP SIILKLKEPHTMSRSQKFLIWLS DLLL MRKALFDHLTARGIQVSFWNDAFWKQHSSPV
<b>Applications</b>	Enzyme-linked Immunoabsorbent Assay Western Blot (Recombinant protein) Antibody Production Protein Array

 Tel: 1-631-559-9269 1-516-512-3133

 Email: [info@creative-biomart.com](mailto:info@creative-biomart.com)  Fax: 1-631-938-8127

 45-1 Ramsey Road, Shirley, NY 11967, USA

<b>Notes</b>	Best use within three months from the date of receipt of this protein.
<b>Storage</b>	Store at -80 centigrade. Aliquot to avoid repeated freezing and thawing.
<b>Storage Buffer</b>	50 mM Tris-HCl, 10 mM reduced Glutathione, pH=8.0 in the elution buffer.

## GENE INFORMATION

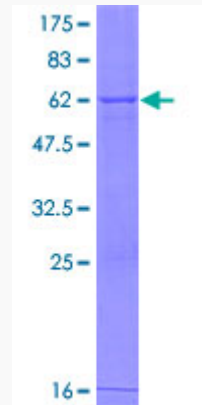
<b>Gene Name</b>	GDPD1 glycerophosphodiester phosphodiesterase domain containing 1 [ Homo sapiens (human) ]
<b>Official Symbol</b>	GDPD1
<b>Synonyms</b>	GDPD1; glycerophosphodiester phosphodiesterase domain containing 1; GDE4; glycerophosphodiester phosphodiesterase domain-containing protein 1; glycerophosphodiester phosphodiesterase 4
<b>Gene ID</b>	284161
<b>mRNA Refseq</b>	NM_001165993
<b>Protein Refseq</b>	NP_001159465
<b>MIM</b>	616317
<b>UniProt ID</b>	Q8N9F7

 Tel: 1-631-559-9269 1-516-512-3133

 Email: [info@creative-biomart.com](mailto:info@creative-biomart.com)  Fax: 1-631-938-8127

 45-1 Ramsey Road, Shirley, NY 11967, USA

**Quality Control  
Testing**



12.5% SDS-PAGE Stained with Coomassie Blue.

 Tel: 1-631-559-9269 1-516-512-3133

 Email: [info@creative-biomart.com](mailto:info@creative-biomart.com)  Fax: 1-631-938-8127

 45-1 Ramsey Road, Shirley, NY 11967, USA