

Recombinant Human GEM Protein, Myc/DDK-tagged, C13 and N15-labeled

Cat. No. GEM-6467H **Lot. No.** (See product label)

SPECIFICATION

Product Overview

GEM MS Standard C13 and N15-labeled recombinant protein (NP_005252) with a C-terminal MYC/DDK tag, was expressed in HEK293 cells.

Species

Human

Source

HEK293

Description

The protein encoded by this gene belongs to the RAD/GEM family of GTP-binding proteins. It is associated with the inner face of the plasma membrane and could play a role as a regulatory protein in receptor-mediated signal transduction. Alternative splicing occurs at this locus and two transcript variants encoding the same protein have been identified.

Molecular Mass

33.8 kDa

AA Sequence

MTLNNVTMRQGTVMQPPQQRWSIPADGRHLMVQKEPHQYSHRNRHSATPEDH
 CRRSWSSDSTDSVISSESGNTYYRVVLIGEQQGVGKSTLANIFAGVHDSMDSCEVL
 GEDTYERTLMVDGESATIILLDMWENKGENEWLHDHCMQVGDAYLIVYSITDRASFE
 KASELRIQLRRARQTEDIPIILVGNKSDLVRCREVSVSEGRACAVVFDCKFIETSAAV
 QHNVKELFEGIVRQVRLRRDSKEKNERRLAYQKRKESMPRKARRFWGKIVAKNNK
 NMAFKLKSCHDLSVLTRTRPLEQKLISEEDLAANDILDYKDDDDKV

Purity

> 80% as determined by SDS-PAGE and Coomassie blue staining

 Tel: 1-631-559-9269 1-516-512-3133

 Email: info@creative-biomart.com  Fax: 1-631-938-8127

 45-1 Ramsey Road, Shirley, NY 11967, USA

Stability	Stable for 3 months from receipt of products under proper storage and handling conditions.
Storage	Store at -80 centigrade. Avoid repeated freeze-thaw cycles.
Concentration	50 µg/mL as determined by BCA
Storage Buffer	100 mM glycine, 25 mM Tris-HCl, pH 7.3.

GENE INFORMATION

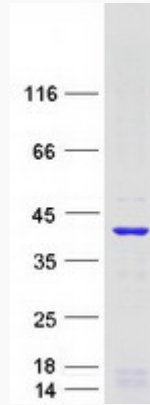
Gene Name	GEM GTP binding protein overexpressed in skeletal muscle [Homo sapiens (human)]
Official Symbol	GEM
Synonyms	GEM; GTP binding protein overexpressed in skeletal muscle; GTP-binding protein GEM; kinase inducible Ras like protein; KIR; RAS-like protein KIR; kinase-inducible Ras-like protein; GTP-binding mitogen-induced T-cell protein; GTP-binding protein overexpressed in skeletal muscle; MGC26294;
Gene ID	2669
mRNA Refseq	NM_005261
Protein Refseq	NP_005252
MIM	600164
UniProt ID	P55040

 Tel: 1-631-559-9269 1-516-512-3133

 Email: info@creative-biomart.com  Fax: 1-631-938-8127

 45-1 Ramsey Road, Shirley, NY 11967, USA

SDS-PAGE



 Tel: 1-631-559-9269 1-516-512-3133

 Email: info@creative-biomart.com  Fax: 1-631-938-8127

 45-1 Ramsey Road, Shirley, NY 11967, USA