

Recombinant Human GEMIN4 Protein, GST-tagged

Cat. No. GEMIN4-4840H Lot. No. (See product label)

SPECIFICATION

Product Overview	Human GEMIN4 partial ORF (NP_056536, 959 a.a. - 1057 a.a.) recombinant protein with GST-tag at N-terminal.
Species	Human
Source	Wheat Germ
Description	The product of this gene is part of a large complex localized to the cytoplasm, nucleoli, and to discrete nuclear bodies called Gemini bodies (gems). The complex functions in spliceosomal snRNP assembly in the cytoplasm, and regenerates spliceosomes required for pre-mRNA splicing in the nucleus. The encoded protein directly interacts with a DEAD box protein and several spliceosome core proteins. Alternatively spliced transcript variants have been described, but their biological validity has not been determined. [provided by RefSeq]
Molecular Mass	36.63 kDa
AA Sequence	AAGPWVQGPEQDLTQEALFVYTQVFCHALHIMAMLHPEVCEPLYVLALETLTTCYETL SKTNPSVSSLLQRAHEQRFLKSIAEGIGPEERRQTLLQKMSS
Applications	Enzyme-linked Immunoabsorbent Assay Western Blot (Recombinant protein) Antibody Production Protein Array

 Tel: 1-631-559-9269 1-516-512-3133

 Email: info@creative-biomart.com  Fax: 1-631-938-8127

 45-1 Ramsey Road, Shirley, NY 11967, USA

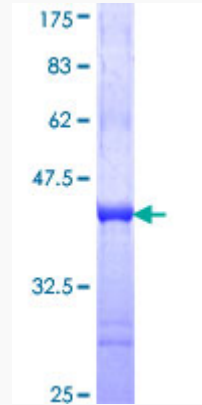
Notes	Best use within three months from the date of receipt of this protein.
Storage	Store at -80 centigrade. Aliquot to avoid repeated freezing and thawing.
Storage Buffer	50 mM Tris-HCl, 10 mM reduced Glutathione, pH=8.0 in the elution buffer.
GENE INFORMATION	
Gene Name	GEMIN4 gem (nuclear organelle) associated protein 4 [Homo sapiens]
Official Symbol	GEMIN4
Synonyms	GEMIN4; gem (nuclear organelle) associated protein 4; gem-associated protein 4; component of gems 4; DKFZP434B131; DKFZP434D174; HC56; HCAP1; HCC associated protein 1; HHRF 1; p97; gemin-4; HCC-associated protein 1; HHRF-1; DKFZp434B131; DKFZp434D174;
Gene ID	50628
mRNA Refseq	NM_015721
Protein Refseq	NP_056536
MIM	606969
UniProt ID	P57678

 Tel: 1-631-559-9269 1-516-512-3133

 Email: info@creative-biomart.com  Fax: 1-631-938-8127

 45-1 Ramsey Road, Shirley, NY 11967, USA

**Quality Control
Testing**



12.5% SDS-PAGE Stained with Coomassie Blue.

 Tel: 1-631-559-9269 1-516-512-3133

 Email: info@creative-biomart.com  Fax: 1-631-938-8127

 45-1 Ramsey Road, Shirley, NY 11967, USA