

Active Recombinant Full Length Human GEMIN5 Protein, C-Flag-tagged

Cat. No. GEMIN5-367HFL **Lot. No.** (See product label)

SPECIFICATION

Product Overview	Recombinant Full Length Human GEMIN5 Protein, fused to Flag-tag at C-terminus, was expressed in Mammalian cells.
Species	Human
Source	Mammalian Cells
Description	This gene encodes a WD repeat protein that is a component of the survival of motor neurons (SMN) complex. The SMN complex plays a critical role in mRNA splicing through the assembly of spliceosomal small nuclear ribonucleoproteins (snRNPs), and may also mediate the assembly and transport of other classes of ribonucleoproteins. The encoded protein is the snRNA-binding component of the SMN complex. Dysregulation of this gene may play a role in alternative mRNA splicing and tumor cell motility. Alternatively spliced transcript variants encoding multiple isoforms have been observed for this gene.
Form	25 mM Tris HCl, pH 7.3, 100 mM glycine, 10% glycerol.
Bio-activity	Pull-down assay
Molecular Mass	168.4 kDa
AA Sequence	MGQEPRTLPPSPNWYCARCSDAVPGGLFGFAARTSVFLVRVGPAGESPGTTPFR VIGELVGHTERVSGF TFSHHPGQYNLCATSSDDGTVKIWDVETKTVVTEHALHQHTI

 Tel: 1-631-559-9269 1-516-512-3133

 Email: info@creative-biomart.com  Fax: 1-631-938-8127

 45-1 Ramsey Road, Shirley, NY 11967, USA

STLHWSPRVKDLIVSGDEKGVVFCYWFN RNDSQHLFIEPRTIFCLTCSPPHEDLVAI
GYKDGIVVIIDISKKGEVIHRLRGHDDEIHSIAWCPLPGED CLSINQEETSEEAEITNG
NAVAQAPVTKGCYLATGSKDQTIRIWSCSRGRGVMILKLPFLKRRGGGIDPT VKERL
WTLHWPSNQPTQLVSSCFGGELLQWDLTQSWRRKYTLFSASSEGNHRSRIVFNL
CPLQTEDDKQ LLLSTSMRDVCKWDIATLECSWTLPSLGGFAYSLAFSSVDIGSLAI
GVGDGMIRVWNTLSIKNNYDVKN FWQGVKSKVTALCWHPKTEGCLAFGTDDGKV
GLYDTYSNKPPQISSTYHKKTVYTLAWGPPVPPMSLGGE GDRPSLALYSCGGEGIV
LQHNPWKLSGEAFDINKLIRDTNSIKYKLPVHTEISWKADGKIMALGNEDGSI EIFQIP
NLKLICTIQHHKLVNTISWHHEHGSQPELSYLMASGSNNAVIYVHNLKTVIESSPES
PVTITE PYRTLSGHTAKITSVAWSPHHDGRLVSASYDGTAAQVWDALREEPLCNFRG
HRGRLLCVAWSPLDPDCIYS GADDFCVHKWLTSMQDHSRPPQGKKSIELEKKRLS
QPKAKPKKKKPTLRTPVKLESIDGNEEESMKENS GPVENGVSDQEGEEQAREPE
LPCGLAPAVSREPVICTPVSSGFESKVTINNKVILLKKEPPKEKPETLI KKRKARSL
PLSTSLDHRKEELHQDCLVLATAKHSRELNEDVSADVEERFHLGLFTDRATLYRMI
DIEG KGHLENGHPELFHQLMLWKGDLDKGVLTAAERGELTDNLVAMAPAAGYHVW
LWAVEAFKQLCFQDQYVK AASHLLSIHKVYEAVELLSNHFYREAIKARLRPED
PVLKDLYSWGTVLERDGHYAVAAKCYLGAT CAYDAAKVLAKKGDAASLRATAELA
AIVGEDELSASLALRCAQELLANNWVGAQEALQLHESLQGRQRLV FCLLELLSRHLE
EKQLSEGKSSSSYHTWNTGTEGPFVERVTAVWKSIFSLDTPQEQEAFQKLQNIKY
PS ATNNTPAKQLLLHICHDLTLAVLSQQMASWDEAVQALLRAVRSYDSGSFTIMQ
EVYSAFLPDGCDHLRD KLGDHQSPATPAFKSLEAFFLYGRLYEFWWSLSRPCPNS
SVWVRAGHRTLSVEPSQQLDTASTEETDPET SQPEPNRPELRLTEEGERMLS
TFKELFSEKHASLQNSQRTVAEVQETLAEMIRQHQSQKSTANG PDKNEPEVEA
EQPLCSSQSQCCKEENEPLSLPELTKRLTEANQRMAKFPESIKAWPPFDVLECCLLV
LLI
RSHFPGCLAQEMQQQAQELLQKYGNKTYRRHCQTFMTRTRPLEQKLISEEDLAA
NDILDYKDDDDKV

Purity

> 80% as determined by SDS-PAGE and Coomassie blue staining.

 Tel: 1-631-559-9269 1-516-512-3133 Email: info@creative-biomart.com  Fax: 1-631-938-8127 45-1 Ramsey Road, Shirley, NY 11967, USA

Stability	Stable for 12 months from the date of receipt of the product under proper storage and handling conditions. Avoid repeated freeze-thaw cycles.
Storage	Store at -80 centigrade.
Concentration	>50 ug/mL as determined by microplate BCA method.
Preparation	Recombinant protein was captured through anti-DDK affinity column followed by conventional chromatography steps.
Protein Families	Druggable Genome
Full Length	Full L.

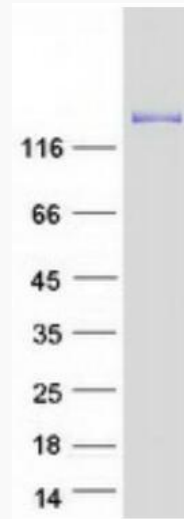
GENE INFORMATION

Gene Name	GEMIN5 gem nuclear organelle associated protein 5 [Homo sapiens (human)]
Official Symbol	GEMIN5
Synonyms	NEDCAM; GEMIN-5
Gene ID	25929
mRNA Refseq	NM_015465.5
Protein Refseq	NP_056280.2
MIM	607005
UniProt ID	Q8TEQ6

 Tel: 1-631-559-9269 1-516-512-3133

 Email: info@creative-biomart.com  Fax: 1-631-938-8127

 45-1 Ramsey Road, Shirley, NY 11967, USA



Coomassie blue staining of purified GEMIN5 protein.

 Tel: 1-631-559-9269 1-516-512-3133

 Email: info@creative-biomart.com  Fax: 1-631-938-8127

 45-1 Ramsey Road, Shirley, NY 11967, USA