

Recombinant Human GEMIN5 Protein, GST-tagged

Cat. No. GEMIN5-4841H Lot. No. (See product label)

SPECIFICATION

Product Overview	Human GEMIN5 partial ORF (NP_056280.1, 401 a.a. - 510 a.a.) recombinant protein with GST-tag at N-terminal.
Species	Human
Source	Wheat Germ
Description	GEMIN5 is part of a large macromolecular complex localized to both the cytoplasm and the nucleus that plays a role in the cytoplasmic assembly of small nuclear ribonucleoproteins (snRNPs). Other members of this complex include SMN (MIM 600354), GEMIN2 (SIP1; MIM 602595), GEMIN3 (DDX20; MIM 606168), and GEMIN4 (MIM 606969).[supplied by OMIM
Molecular Mass	37.84 kDa
AA Sequence	DGMIRVWNTLSIKNNYDVKNFWQGVKSKVTALCWHPTKEGCLAFGTDDGKVGLYD TYSNKPPQISSTYHKKTVYTLAWGPPVPPMSLGGEGDRPSLALYSCGGEGIVLQH
Applications	Enzyme-linked Immunoabsorbent Assay Western Blot (Recombinant protein) Antibody Production Protein Array
Notes	Best use within three months from the date of receipt of this protein.

 Tel: 1-631-559-9269 1-516-512-3133

 Email: info@creative-biomart.com  Fax: 1-631-938-8127

 45-1 Ramsey Road, Shirley, NY 11967, USA

Storage Store at -80 centigrade. Aliquot to avoid repeated freezing and thawing.

Storage Buffer 50 mM Tris-HCl, 10 mM reduced Glutathione, pH=8.0 in the elution buffer.

GENE INFORMATION

Gene Name GEMIN5 gem (nuclear organelle) associated protein 5 [Homo sapiens]

Official Symbol GEMIN5

Synonyms GEMIN5; gem (nuclear organelle) associated protein 5; gem-associated protein 5; GEMIN-5; MGC142174; DKFZp586M1824;

Gene ID 25929

mRNA Refseq NM_001252156

Protein Refseq NP_001239085

MIM 607005

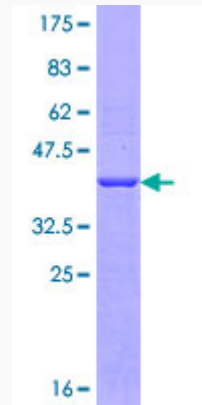
UniProt ID Q8TEQ6

 Tel: 1-631-559-9269 1-516-512-3133

 Email: info@creative-biomart.com  Fax: 1-631-938-8127

 45-1 Ramsey Road, Shirley, NY 11967, USA

**Quality Control
Testing**



12.5% SDS-PAGE Stained with Coomassie Blue.

 Tel: 1-631-559-9269 1-516-512-3133

 Email: info@creative-biomart.com  Fax: 1-631-938-8127

 45-1 Ramsey Road, Shirley, NY 11967, USA