

# Recombinant Human GEMIN5 Protein, Myc/DDK-tagged, C13 and N15-labeled

**Cat. No.** GEMIN5-5426H    **Lot. No.** (See product label)

## SPECIFICATION

<b>Product Overview</b>	GEMIN5 MS Standard C13 and N15-labeled recombinant protein (NP_056280) with a C-terminal MYC/DDK tag, was expressed in HEK293 cells.
<b>Species</b>	Human
<b>Source</b>	HEK293
<b>Description</b>	This gene encodes a WD repeat protein that is a component of the survival of motor neurons (SMN) complex. The SMN complex plays a critical role in mRNA splicing through the assembly of spliceosomal small nuclear ribonucleoproteins (snRNPs), and may also mediate the assembly and transport of other classes of ribonucleoproteins. The encoded protein is the snRNA-binding component of the SMN complex. Dysregulation of this gene may play a role in alternative mRNA splicing and tumor cell motility. Alternatively spliced transcript variants encoding multiple isoforms have been observed for this gene.
<b>Molecular Mass</b>	168.4 kDa
<b>AA Sequence</b>	MGQEPRTLPPSPNWYCARCSDAVPGGLFGFAARTSVFLVRVGPAGESP GTPPFR VIGELVGHTERVSGFTFSHHPGQYNLCATSSDDGTVKIWDVETKTVVTEHALHQHTI STLHWSPRVKDLIVSGDEKGVVFCYWFNRNDSQHLFIEPRTIFCLTCSPHHEDLVAI GYKDGIVVIIDISKKGEVIHRLRGHDDEIHSIAWCPLPGEDCLSINQEETSEAEITNGN AVAQAPVTKGCYLATGSKDQTIRIWSCSRGRGVMILKLPFLKRRGGGIDPTVKERLW

 Tel: 1-631-559-9269    1-516-512-3133

 Email: [info@creative-biomart.com](mailto:info@creative-biomart.com)     Fax: 1-631-938-8127

 45-1 Ramsey Road, Shirley, NY 11967, USA

LTLHWPSNQPTQLVSSCFGGELLQWDLTQSWRRKYTLFSASSEGQNHSRIVFNLCP  
 LQTEDDKQLLLSTSMRDVVKCWDIATLECSWTLPSLGGFAYSLAFSSVDIGSLAIGV  
 GDGMIRVWNTLSIKNNYDVKNFWQGVKSKVTALCWHPKTEGCLAFGTDDGKVGLY  
 DTYSNKPPQISSYHKKTVYTLAWGPPVPPMSLGGEGDRPSLALYSCGGEGIVLQH  
 NPWKLSGEAFDINKLIRDNTNSIKYKLPVHTEISWKADGKIMALGNEDGSIEIFQIPNLKL  
 ICTIQHHKLVNTISWHHEHGSQPELSYLMASGSNNAVIYVHNLKTVIESSPESPVTIT  
 EPYRTLSGHTAKITSVAWSPHHDGRLVSASYDGTAQVWDALREEPLCNFRGHRGR  
 LLCVAWSPLDPCIYSGADDFCVHKWLTSMQDHSRPPQGKKSIELEKKRLSQPKAK  
 PKKKKKPTLRTPVKLESIDGNEEESMKENSGPVENGVSQDQEGEEQAREPELPCGLA  
 PAVSREPVICTPVSSGFESKVTINNKVILLKKEPPKEKPEKLIKKRARSLLPLSTSLD  
 HRSKEELHQDCLVLATAKHSRELNEDVSADVEERFHLGLFTDRATLYRMIDIEGKGH  
 LENGPELPHQLMLWKGDLDKGVLQTAERGELTDNLVAMAPAAGYHVWLWAVEAF  
 AKQLCFQDQYVKAASHLLSIHKVYEAVELLKSNHFYREAIAIAKARLRPEDPVLKDLYL  
 SWGTVLERDGHYAVAAKCYLGATCAYDAAKVLAKKGDAASLRATAELAAIVGEDEL  
 SASLALRCAQELLANNWVGAQEALQLHESLQGQRLVFCLLELLSRHLEEKQLSEG  
 KSSSYHTWNTGTGEPFVERVTAVWKSIFSLDTPEQYQEAQKLQNIKYP SATNNT  
 PAKQLLHICHDLTAVLSQQMASWDEAVQALLRAVVRSYDSGSFTIMQEVYSAFLP  
 DGCDHLRDKLGDHQSPATPAFKSLEAFFLYGRLYEFWWLSRPCPNSSVWVRAGH  
 RTL SVEPSQQLDTASTEETDPETSQPEPNRPSLDLRLTEEGERMLSTFKELFSEKH  
 ASLQNSQRTVAEVQETLAEMIRQHQSQQLCKSTANGPDKNEPEVEAEQPLCSSQS  
 QCKEEKNEPLSLPELTKRLTEANQRMAKFPESIKAWPFPDVLECCLVLLLIRSHFPGC  
 LAQEMQQQAQELLQKYGNTKTYRRHCQTFMTRTRPLEQKLISEEDLAANDILDYK  
 DDDDKV

**Purity** > 80% as determined by SDS-PAGE and Coomassie blue staining

**Stability** Stable for 3 months from receipt of products under proper storage and handling conditions.

**Storage** Store at -80 centigrade. Avoid repeated freeze-thaw cycles.

 Tel: 1-631-559-9269 1-516-512-3133

 Email: [info@creative-biomart.com](mailto:info@creative-biomart.com)  Fax: 1-631-938-8127

 45-1 Ramsey Road, Shirley, NY 11967, USA

**Concentration** 50 µg/mL as determined by BCA

**Storage Buffer** 100 mM glycine, 25 mM Tris-HCl, pH 7.3.

## GENE INFORMATION

**Gene Name** GEMIN5 gem nuclear organelle associated protein 5 [ Homo sapiens (human) ]

**Official Symbol** GEMIN5

**Synonyms** GEMIN5; gem (nuclear organelle) associated protein 5; gem-associated protein 5; GEMIN-5; MGC142174; DKFZp586M1824;

**Gene ID** 25929

**mRNA Refseq** NM\_015465

**Protein Refseq** NP\_056280

**MIM** 607005

**UniProt ID** Q8TEQ6

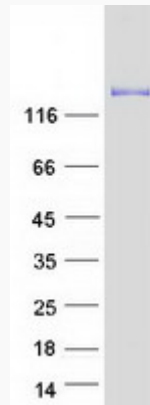
 Tel: 1-631-559-9269 1-516-512-3133

 Email: [info@creative-biomart.com](mailto:info@creative-biomart.com)  Fax: 1-631-938-8127

 45-1 Ramsey Road, Shirley, NY 11967, USA



SDS-PAGE



Tel: 1-631-559-9269 1-516-512-3133

Email: [info@creative-biomart.com](mailto:info@creative-biomart.com) Fax: 1-631-938-8127

45-1 Ramsey Road, Shirley, NY 11967, USA