

Recombinant Human GEMIN6 Protein, GST-tagged

Cat. No. GEMIN6-4842H Lot. No. (See product label)

SPECIFICATION

Product Overview	Human GEMIN6 full-length ORF (AAH18195, 1 a.a. - 167 a.a.) recombinant protein with GST-tag at N-terminal.
Species	Human
Source	Wheat Germ
Description	GEMIN6 is part of a large macromolecular complex, localized to both the cytoplasm and the nucleus, that plays a role in the cytoplasmic assembly of small nuclear ribonucleoproteins (snRNPs). Other members of this complex include SMN (MIM 600354), GEMIN2 (SIP1; MIM 602595), GEMIN3 (DDX20; MIM 606168), GEMIN4 (MIM 606969), and GEMIN5 (MIM 607005).[supplied by OMIM
Molecular Mass	44.11 kDa
AA Sequence	MSEWMKKGPLEWQDYIYKEVRVTASEKNEYKGWVLTTPVSVANIVLVNFLEDGSM SVTGIMGHAVQTVETMNEGDHRVREKLMHLFTSGDCKAYSPEDLEERKNSLKKWL EKNHIPITEQGDAPRTLCAVAGVLTIDPPYDPENCSSSNEILSRVQDLIEGHLTASQ
Applications	Enzyme-linked Immunoabsorbent Assay Western Blot (Recombinant protein) Antibody Production Protein Array
Notes	Best use within three months from the date of receipt of this protein.

 Tel: 1-631-559-9269 1-516-512-3133

 Email: info@creative-biomart.com  Fax: 1-631-938-8127

 45-1 Ramsey Road, Shirley, NY 11967, USA

Storage Store at -80 centigrade. Aliquot to avoid repeated freezing and thawing.

Storage Buffer 50 mM Tris-HCl, 10 mM reduced Glutathione, pH=8.0 in the elution buffer.

GENE INFORMATION

Gene Name GEMIN6 gem (nuclear organelle) associated protein 6 [Homo sapiens]

Official Symbol GEMIN6

Synonyms GEMIN6; gem (nuclear organelle) associated protein 6; gem-associated protein 6; FLJ23459; SIP2; gemin 6; gemin-6;

Gene ID 79833

mRNA Refseq NM_024775

Protein Refseq NP_079051

MIM 607006

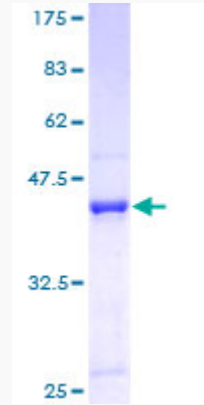
UniProt ID Q8WXD5

 Tel: 1-631-559-9269 1-516-512-3133

 Email: info@creative-biomart.com  Fax: 1-631-938-8127

 45-1 Ramsey Road, Shirley, NY 11967, USA

**Quality Control
Testing**



12.5% SDS-PAGE Stained with Coomassie Blue.

 Tel: 1-631-559-9269 1-516-512-3133

 Email: info@creative-biomart.com  Fax: 1-631-938-8127

 45-1 Ramsey Road, Shirley, NY 11967, USA