

Recombinant Human GEMIN6 protein, His-tagged

Cat. No. GEMIN6-7560H Lot. No. (See product label)

SPECIFICATION

Product Overview	Recombinant Human GEMIN6 protein(1-167 aa), fused with N-terminal His tag, was expressed in E.coli.
Species	Human
Source	E.coli
ProteinLength	1-167 aa
Form	The purified protein was Lyophilized from sterile PBS (58mM Na ₂ HPO ₄ , 17mM NaH ₂ PO ₄ , 68mM NaCl, pH7.4). 5 % trehalose and 5 % mannitol are added as protectant before lyophilization. The elution buffer contain 300mM imidazole.
AASequence	MSEWMKKGPLEWQDYIYKEVRVTASEKNEYKGWVLTTPV SANIVLVNFLEDGSM SVTGIMGHAVQTVETMNEGDHRVREKLMHLFTSGDCKAYSPEDLEERKNSLKKWL EKNHIPITEQGDAPRTL CVAGVLTIDPPYDPENCSSSNEIILSRVQDLIEGHLTASQ
Purity	85%, by SDS-PAGE with Coomassie Brilliant Blue staining.
Storage	Store at 2-8°C for 1-2 weeks. Aliquot and store at -20°C to -80°C for up to 3 months, reconstitution with sterile water and addition of an equal volume of glycerol. Avoid repeat freeze-thaw cycles.
Reconstitution	Dissolve the product in 200 µl sterile water to achieve a working concentration of 0.25 g/µl. If experimental compatibility allows, mix the aqueous solution with an equal

 Tel: 1-631-559-9269 1-516-512-3133

 Email: info@creative-biomart.com  Fax: 1-631-938-8127

 45-1 Ramsey Road, Shirley, NY 11967, USA

volume of glycerol (1:1 ratio) after initial reconstitution.

GENE INFORMATION

Gene Name	GEMIN6 gem (nuclear organelle) associated protein 6 [Homo sapiens]
Official Symbol	GEMIN6
Synonyms	GEMIN6; gem (nuclear organelle) associated protein 6; gem-associated protein 6; FLJ23459; SIP2; gemin 6; gemin-6;
Gene ID	79833
mRNA Refseq	NM_024775
Protein Refseq	NP_079051
MIM	607006
UniProt ID	Q8WXD5

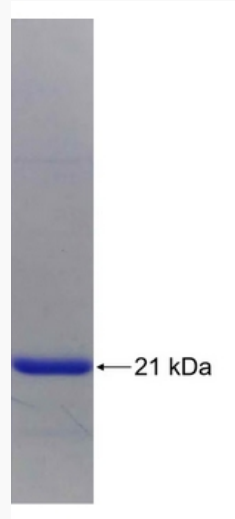
 Tel: 1-631-559-9269 1-516-512-3133

 Email: info@creative-biomart.com  Fax: 1-631-938-8127

 45-1 Ramsey Road, Shirley, NY 11967, USA



SDS-PAGE



Tel: 1-631-559-9269 1-516-512-3133

Email: info@creative-biomart.com Fax: 1-631-938-8127

45-1 Ramsey Road, Shirley, NY 11967, USA