

Recombinant Human GEMIN7 Protein, GST-tagged

Cat. No. GEMIN7-4843H Lot. No. (See product label)

SPECIFICATION

Product Overview	Human GEMIN7 full-length ORF (AAH07793, 1 a.a. - 131 a.a.) recombinant protein with GST-tag at N-terminal.
Species	Human
Source	Wheat Germ
Description	The protein encoded by this gene is a component of the core SMN complex, which is required for pre-mRNA splicing in the nucleus. The encoded protein is found in the nucleoplasm, in nuclear "gems" (Gemini of Cajal bodies), and in the cytoplasm. Three transcript variants encoding the same protein have been found for this gene. [provided by RefSeq]
Molecular Mass	40.15 kDa
AA Sequence	MQTPVNIPVPLRLPRGPDGFSRGFAPDGRRAPLRPEVPEIQECPIAQESLESQEQR ARAALRERYLRLLAMVGHQVSFTLHEGVRVAAHFGATDLDVANFYVSQLQTPIGV QAEALLRCSDIISYTFKP
Applications	Enzyme-linked Immunoabsorbent Assay Western Blot (Recombinant protein) Antibody Production Protein Array
Notes	Best use within three months from the date of receipt of this protein.

 Tel: 1-631-559-9269 1-516-512-3133

 Email: info@creative-biomart.com  Fax: 1-631-938-8127

 45-1 Ramsey Road, Shirley, NY 11967, USA

Storage Store at -80 centigrade. Aliquot to avoid repeated freezing and thawing.

Storage Buffer 50 mM Tris-HCl, 10 mM reduced Glutathione, pH=8.0 in the elution buffer.

GENE INFORMATION

Gene Name GEMIN7 gem (nuclear organelle) associated protein 7 [Homo sapiens]

Official Symbol GEMIN7

Synonyms GEMIN7; gem (nuclear organelle) associated protein 7; gem-associated protein 7; FLJ13956; gemin 7; gemin-7; SIP3;

Gene ID 79760

mRNA Refseq NM_001007269

Protein Refseq NP_001007270

MIM 607419

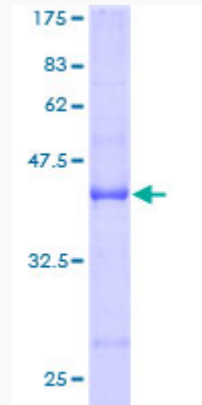
UniProt ID Q9H840

 Tel: 1-631-559-9269 1-516-512-3133

 Email: info@creative-biomart.com  Fax: 1-631-938-8127

 45-1 Ramsey Road, Shirley, NY 11967, USA

**Quality Control
Testing**



12.5% SDS-PAGE Stained with Coomassie Blue.

 Tel: 1-631-559-9269 1-516-512-3133

 Email: info@creative-biomart.com  Fax: 1-631-938-8127

 45-1 Ramsey Road, Shirley, NY 11967, USA