

Recombinant Human GEMIN8 Protein, GST-tagged

Cat. No. GEMIN8-4845H Lot. No. (See product label)

SPECIFICATION

Product Overview	Human GEMIN8 full-length ORF (NP_060326.1, 1 a.a. - 242 a.a.) recombinant protein with GST-tag at N-terminal.
Species	Human
Source	Wheat Germ
Description	The protein encoded by this gene is part of the SMN complex, which is necessary for spliceosomal snRNP assembly in the cytoplasm and pre-mRNA splicing in the nucleus. The encoded protein binds to both SMN1 and the GEMIN6/GEMIN7 heterodimer, mediating their interaction. This protein is found in nuclear Gemini of Cajal bodies (gems) and in the cytoplasm. Three transcript variants encoding the same protein have been found for this gene. [provided by RefSeq, May 2010]
Molecular Mass	55 kDa
AA Sequence	MAAVKASTSKATRPWYSHPVYARYWQHYHQAMAWMQSHHNAYRKAVESCFNLP WYLPSTALLPQSSYDNEAAYPQSFYDHHVAWQDYPCSSSHFRRSGQHPRYSSRIQA STKEDQALSKEEEMETESDAEVECDLSNMEITEELRQYFAETERHREERRRQQQLD AERLDSYVNADHDLYCNTRRSVEAPTERPGERRQAEMKRLYGDSAQIAMEAAV QLSFDKHCDRKQPKYWPVIPLKF
Applications	Enzyme-linked Immunoabsorbent Assay Western Blot (Recombinant protein) Antibody Production

 Tel: 1-631-559-9269 1-516-512-3133

 Email: info@creative-biomart.com  Fax: 1-631-938-8127

 45-1 Ramsey Road, Shirley, NY 11967, USA

Protein Array

Notes	Best use within three months from the date of receipt of this protein.
Storage	Store at -80 centigrade. Aliquot to avoid repeated freezing and thawing.
Storage Buffer	50 mM Tris-HCl, 10 mM reduced Glutathione, pH=8.0 in the elution buffer.

GENE INFORMATION

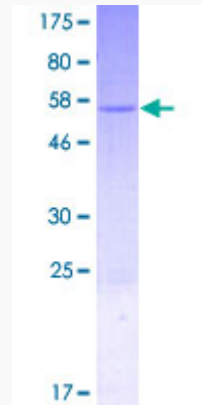
Gene Name	GEMIN8 gem (nuclear organelle) associated protein 8 [Homo sapiens]
Official Symbol	GEMIN8
Synonyms	GEMIN8; gem (nuclear organelle) associated protein 8; FAM51A1, family with sequence similarity 51, member A1; gem-associated protein 8; FLJ20514; gemin-8; family with sequence similarity 51, member A1; FAM51A1; FLJ43072;
Gene ID	54960
mRNA Refseq	NM_001042479
Protein Refseq	NP_001035944
MIM	300962
UniProt ID	Q9NWZ8

 Tel: 1-631-559-9269 1-516-512-3133

 Email: info@creative-biomart.com  Fax: 1-631-938-8127

 45-1 Ramsey Road, Shirley, NY 11967, USA

**Quality Control
Testing**



12.5% SDS-PAGE Stained with Coomassie Blue.

 Tel: 1-631-559-9269 1-516-512-3133

 Email: info@creative-biomart.com  Fax: 1-631-938-8127

 45-1 Ramsey Road, Shirley, NY 11967, USA