

Recombinant Human GEMIN8 Protein, Myc/DDK-tagged, C13 and N15-labeled

Cat. No. GEMIN8-5583H **Lot. No.** (See product label)

SPECIFICATION

Product Overview	GEMIN8 MS Standard C13 and N15-labeled recombinant protein (NP_001035944) with a C-terminal MYC/DDK tag, was expressed in HEK293 cells.
Species	Human
Source	HEK293
Description	The protein encoded by this gene is part of the SMN complex, which is necessary for spliceosomal snRNP assembly in the cytoplasm and pre-mRNA splicing in the nucleus. The encoded protein binds to both SMN1 and the GEMIN6/GEMIN7 heterodimer, mediating their interaction. This protein is found in nuclear Gemini of Cajal bodies (gems) and in the cytoplasm. Three transcript variants encoding the same protein have been found for this gene.
Molecular Mass	28.6 kDa
AA Sequence	MAAVKASTSKATRPWYSHPVYARYWQHYPQAMAWMQSHHNAYRKAVESCFNLP WYLPSTALLPQSSYDNEAAYPQSFYDHHVAWQDYPCSSSHFRRSGQHPRYSSRIQA STKEDQALSKEEEMETESDAEVECDLSNMEITEELRQYFAETERHREERRRQQQLD AERLDSYVNADHDLYCNTRRSVEAPTERPGERRQAEMKRLYGDSAAKIQAMEAAV QLSFDKHCDRKQPKYWPVIPLKFTRTRPLEQKLISEEDLAANDILDYKDDDDKV
Purity	> 80% as determined by SDS-PAGE and Coomassie blue staining

 Tel: 1-631-559-9269 1-516-512-3133

 Email: info@creative-biomart.com  Fax: 1-631-938-8127

 45-1 Ramsey Road, Shirley, NY 11967, USA

Stability	Stable for 3 months from receipt of products under proper storage and handling conditions.
Storage	Store at -80 centigrade. Avoid repeated freeze-thaw cycles.
Concentration	50 µg/mL as determined by BCA
Storage Buffer	100 mM glycine, 25 mM Tris-HCl, pH 7.3.

GENE INFORMATION

Gene Name	GEMIN8 gem nuclear organelle associated protein 8 [Homo sapiens (human)]
Official Symbol	GEMIN8
Synonyms	GEMIN8; gem (nuclear organelle) associated protein 8; FAM51A1, family with sequence similarity 51, member A1; gem-associated protein 8; FLJ20514; gemin-8; family with sequence similarity 51, member A1; FAM51A1; FLJ43072;
Gene ID	54960
mRNA Refseq	NM_001042479
Protein Refseq	NP_001035944
MIM	300962
UniProt ID	Q9NWZ8

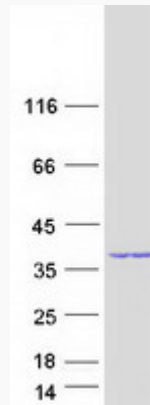
 Tel: 1-631-559-9269 1-516-512-3133

 Email: info@creative-biomart.com  Fax: 1-631-938-8127

 45-1 Ramsey Road, Shirley, NY 11967, USA



SDS-PAGE



Tel: 1-631-559-9269 1-516-512-3133

Email: info@creative-biomart.com Fax: 1-631-938-8127

45-1 Ramsey Road, Shirley, NY 11967, USA