

## Recombinant Mouse GFAP protein(1-430aa), His&Myc-tagged

Cat. No. GFAP-1832M Lot. No. (See product label)

### SPECIFICATION

<b>Product Overview</b>	Recombinant Mouse GFAP protein(P03995)(1-430aa), fused with N-terminal His tag and C-terminal Myc tag, was expressed in E.coli.
<b>Species</b>	Mouse
<b>Source</b>	E.coli
<b>ProteinLength</b>	1-430aa
<b>Form</b>	If the delivery form is liquid, the default storage buffer is Tris/PBS-based buffer, 5%-50% glycerol. If the delivery form is lyophilized powder, the buffer before lyophilization is Tris/PBS-based buffer, 6% Trehalose, pH 8.0.
<b>Molecular Mass</b>	57.3 kDa
<b>Purity</b>	Greater than 85% as determined by SDS-PAGE.
<b>Storage</b>	Store at -20°C/-80°C upon receipt, aliquoting is necessary for mutiple use. Avoid repeated freeze-thaw cycles.
<b>Reconstitution</b>	We recommend that this vial be briefly centrifuged prior to opening to bring the contents to the bottom. Please reconstitute protein in deionized sterile water to a concentration of 0.1-1.0 mg/mL. We recommend to add 5-50% of glycerol (final concentration) and aliquot for long-term storage at -20°C/-80°C.

 Tel: 1-631-559-9269 1-516-512-3133

 Email: [info@creative-biomart.com](mailto:info@creative-biomart.com)  Fax: 1-631-938-8127

 45-1 Ramsey Road, Shirley, NY 11967, USA

**AA Sequence**

MERRRITSARRSYASETVVRGLGPSRQLGTMPRFSLSRMTPPLPARVDFSLAGALN  
AGFKETRASERAEMMELNDRFASYIEKVRFLQQNKALAAELNQLRAKEPTKLADVY  
QAE LRELRLRLDQLTANSARLEVERDNFAQDLGTLRQKLQDETNRLEAENNLAAY  
RQEADATLARVDLERKVESLEEEIQFLRKIYEEEVRELREQLAQQQVHVEMDVAKP  
DLTAALREIRTQYEAVATSNMQETE EWYRSKFADLTD AASRNAELLRQAKHEANDY  
RRQLQALTCDLES LRGTNESLERQMREQEERHARESASYQEALARLEEEGQSLKE  
EMARHLQEYQDLLNVKLALDIEIATYRKLEGEENRITIPVQTF SNLQIRETSLDTKSV  
SEGLKRNIVVKT VEMRDGEVIKDSKQEHKDVVM

**GENE INFORMATION**

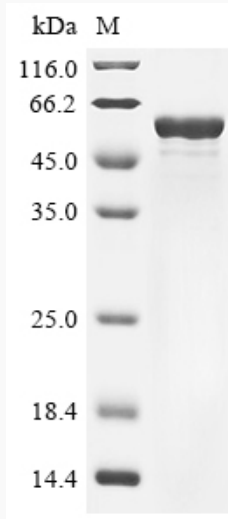
<b>Gene Name</b>	Gfap glial fibrillary acidic protein [ <i>Mus musculus</i> ]
<b>Official Symbol</b>	GFAP
<b>Synonyms</b>	GFAP; glial fibrillary acidic protein; intermediate filament protein; AI836096;
<b>Gene ID</b>	14580
<b>mRNA Refseq</b>	NM_001131020
<b>Protein Refseq</b>	NP_001124492

 Tel: 1-631-559-9269 1-516-512-3133

 Email: [info@creative-biomart.com](mailto:info@creative-biomart.com)  Fax: 1-631-938-8127

 45-1 Ramsey Road, Shirley, NY 11967, USA

**SDS-PAGE**



 Tel: 1-631-559-9269 1-516-512-3133

 Email: [info@creative-biomart.com](mailto:info@creative-biomart.com)  Fax: 1-631-938-8127

 45-1 Ramsey Road, Shirley, NY 11967, USA