

Recombinant Human GFER Protein, Myc/DDK-tagged, C13 and N15-labeled

Cat. No. GFER-1412H **Lot. No.** (See product label)

SPECIFICATION

Product Overview	GFER MS Standard C13 and N15-labeled recombinant protein (NP_005253) with a C-terminal MYC/DDK tag, was expressed in HEK293 cells.
Species	Human
Source	HEK293
Description	The hepatotrophic factor designated augments of liver regeneration (ALR) is thought to be one of the factors responsible for the extraordinary regenerative capacity of mammalian liver. It has also been called hepatic regenerative stimulation substance (HSS). The gene resides on chromosome 16 in the interval containing the locus for polycystic kidney disease (PKD1). The putative gene product is 42% similar to the scERV1 protein of yeast. The yeast scERV1 gene had been found to be essential for oxidative phosphorylation, the maintenance of mitochondrial genomes, and the cell division cycle. The human gene is both the structural and functional homolog of the yeast scERV1 gene.
Molecular Mass	23.3 kDa
AA Sequence	MAAPGERGRFHGGNLFPLPGGARSEMDDLATDARGRGAGRRDAAASASTPAQA PTSDSPVAEDASRRRPCRACVDFKTMRTQQKRDTKFREDCPPDREELGRHWA VLHTLAAYYPDLPTPEQQQDMAQFIHLFSKFYPCEECAEDLRKRLCRNHPDTRTRA CFTQWLCHLHNEVNRKLGKPDFDCSKVDERWRDGWKDGSCDTRTRPLEQKLISEE

 Tel: 1-631-559-9269 1-516-512-3133

 Email: info@creative-biomart.com  Fax: 1-631-938-8127

 45-1 Ramsey Road, Shirley, NY 11967, USA



DLAANDILDYKDDDDKV

Purity > 80% as determined by SDS-PAGE and Coomassie blue staining

Stability Stable for 3 months from receipt of products under proper storage and handling conditions.

Storage Store at -80 centigrade. Avoid repeated freeze-thaw cycles.

Concentration 50 µg/mL as determined by BCA

Storage Buffer 100 mM glycine, 25 mM Tris-HCl, pH 7.3.

GENE INFORMATION

Gene Name [GFER growth factor, augmenter of liver regeneration \[Homo sapiens \(human\) \]](#)

Official Symbol [GFER](#)

Synonyms GFER; growth factor, augmenter of liver regeneration; growth factor, erv1 (S. cerevisiae) like (augmenter of liver regeneration); FAD-linked sulfhydryl oxidase ALR; ALR; ERV1; ERV1 homolog (S. cerevisiae); HERV1; HPO1; HPO2; HSS; ERV1 homolog; hepatopoietin protein; erv1-like growth factor; hepatic regenerative stimulation substance; HPO;

Gene ID [2671](#)

mRNA Refseq [NM_005262](#)

Protein Refseq [NP_005253](#)

Tel: 1-631-559-9269 1-516-512-3133

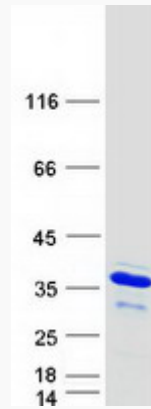
Email: info@creative-biomart.com Fax: 1-631-938-8127

45-1 Ramsey Road, Shirley, NY 11967, USA

MIM 600924

UniProt ID P55789

SDS-PAGE



 Tel: 1-631-559-9269 1-516-512-3133

 Email: info@creative-biomart.com  Fax: 1-631-938-8127

 45-1 Ramsey Road, Shirley, NY 11967, USA