

Recombinant Human GFER Protein, GST-tagged

Cat. No. GFER-4849H Lot. No. (See product label)

SPECIFICATION

Product Overview	Human GFER full-length ORF (AAH28348, 1 a.a. - 125 a.a.) recombinant protein with GST-tag at N-terminal.
Species	Human
Source	Wheat Germ
Description	The hepatotrophic factor designated augments of liver regeneration (ALR) is thought to be one of the factors responsible for the extraordinary regenerative capacity of mammalian liver. It has also been called hepatic regenerative stimulation substance (HSS). The gene resides on chromosome 16 in the interval containing the locus for polycystic kidney disease (PKD1). The putative gene product is 42% similar to the scERV1 protein of yeast. The yeast scERV1 gene had been found to be essential for oxidative phosphorylation, the maintenance of mitochondrial genomes, and the cell division cycle. The human gene is both the structural and functional homolog of the yeast scERV1 gene. [provided by RefSeq
Molecular Mass	39.49 kDa
AA Sequence	MRTQQKRDTKFRDCPPDREELGRHSWAVLHTLAAYYDLPTPEQQQDMAQFIHL FSKFYPCEECAEDLRKRLCRNHPDTRTRACFTQWLCHLHNEVNRKLGKPDFDCSK VDERWRDGGWKDGSCD
Applications	Enzyme-linked Immunoabsorbent Assay Western Blot (Recombinant protein)

 Tel: 1-631-559-9269 1-516-512-3133

 Email: info@creative-biomart.com  Fax: 1-631-938-8127

 45-1 Ramsey Road, Shirley, NY 11967, USA

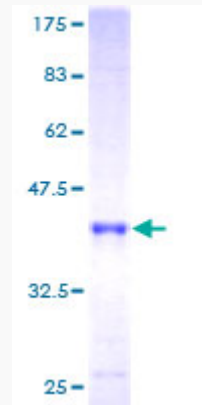
	Antibody Production Protein Array
Notes	Best use within three months from the date of receipt of this protein.
Storage	Store at -80 centigrade. Aliquot to avoid repeated freezing and thawing.
Storage Buffer	50 mM Tris-HCl, 10 mM reduced Glutathione, pH=8.0 in the elution buffer.
GENE INFORMATION	
Gene Name	GFER growth factor, augmenter of liver regeneration [Homo sapiens]
Official Symbol	GFER
Synonyms	GFER; growth factor, augmenter of liver regeneration; growth factor, erv1 (S. cerevisiae) like (augmenter of liver regeneration); FAD-linked sulfhydryl oxidase ALR; ALR; ERV1; ERV1 homolog (S. cerevisiae); HERV1; HPO1; HPO2; HSS; ERV1 homolog; hepatopoietin protein; erv1-like growth factor; hepatic regenerative stimulation substance; HPO;
Gene ID	2671
mRNA Refseq	NM_005262
Protein Refseq	NP_005253
MIM	600924
UniProt ID	P55789

 Tel: 1-631-559-9269 1-516-512-3133

 Email: info@creative-biomart.com  Fax: 1-631-938-8127

 45-1 Ramsey Road, Shirley, NY 11967, USA

**Quality Control
Testing**



12.5% SDS-PAGE Stained with Coomassie Blue.

 Tel: 1-631-559-9269 1-516-512-3133

 Email: info@creative-biomart.com  Fax: 1-631-938-8127

 45-1 Ramsey Road, Shirley, NY 11967, USA