

Recombinant Full Length Human GFM1 Protein, C-Flag-tagged

Cat. No. GFM1-1770HFL Lot. No. (See product label)

SPECIFICATION

Product Overview	Recombinant Full Length Human GFM1 Protein, fused to Flag-tag at C-terminus, was expressed in Mammalian cells.
Species	Human
Source	Mammalian Cells
Description	Eukaryotes contain two protein translational systems, one in the cytoplasm and one in the mitochondria. Mitochondrial translation is crucial for maintaining mitochondrial function and mutations in this system lead to a breakdown in the respiratory chain-oxidative phosphorylation system and to impaired maintenance of mitochondrial DNA. This gene encodes one of the mitochondrial translation elongation factors. Its role in the regulation of normal mitochondrial function and in different disease states attributed to mitochondrial dysfunction is not known.
Form	25 mM Tris HCl, pH 7.3, 100 mM glycine, 10% glycerol.
Molecular Mass	83.3 kDa
AA Sequence	MRLLGAAVAALGRGRAPASLQWQRKQVNWKACRWSSSGVIPNEKIRNIGISAHID SGKTTLTERVLYYT GRIAKMHEVKGKDGVGAVMDSMELERQRGITIQSAATYTMWK DVNINIIDTPGHVDFTIEVERALRVLDG AVLVLCAVGGVQCQTMTVNRQMKRYNVPF LTFINKLDRMGSNPARALQQMRSKLNHNAAFQIPMGLEGN FKGIVDLIEERAIYFD GDFGQIVRYGEIPAELRAAATDHRQELIECVANSDEQLGEMFLEEKIPSISDLK LAIR RATLKRSFTPVFLGSALKNGVQPLLDVAVLEYLPNPSEVQNYAILNKEDDSKEKTKIL

 Tel: 1-631-559-9269 1-516-512-3133

 Email: info@creative-biomart.com  Fax: 1-631-938-8127

 45-1 Ramsey Road, Shirley, NY 11967, USA



MNSSRDNS HPFVGLAFKLEVGRFGQLTYVRSYQGELKKGDTIYNTRTRKKVRLQRL
 ARMHADMMEDVEEVYAGDICAL FGIDCASGDTFTDKANGLSMESIHVPDPVISIAM
 KPSNKNLDLEKFSKIGRFTREDPTFKVYFDTENKE TVISGMGELHLEIYAQRLEREY
 GCPCITGKPKVAFRETITAPVPFDFTTHKKQSGGAGQYGKIVIGVLEPLD PEDYTKLEF
 SDETFGSNIPKQFVPAVEKGFLDACEKGPLSGHKLSGLRFVLQDGAHMMVDSNEISF
 IRAG EGALKQALANATLCILEPIMAVEVVAPNEFQGQVIAGINRRRHGVITGQDGVEDY
 FTLYADVPLNDMFGYS TELRSCTEGKGEYTMESRYQPCLPSTQEDVINKYLEATG
 QLPVKKGKAKN SGPTRTRPLEQKLISEEDLAANDILDYKDDDDKV

Purity	> 80% as determined by SDS-PAGE and Coomassie blue staining.
Stability	Stable for 12 months from the date of receipt of the product under proper storage and handling conditions. Avoid repeated freeze-thaw cycles.
Storage	Store at -80 centigrade.
Concentration	>50 ug/mL as determined by microplate BCA method.
Preparation	Recombinant protein was captured through anti-DDK affinity column followed by conventional chromatography steps.
Full Length	Full L.

GENE INFORMATION

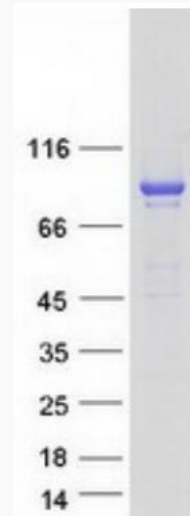
Gene Name	GFM1 G elongation factor mitochondrial 1 [Homo sapiens (human)]
Official Symbol	GFM1
Synonyms	EFG; GFM; EFG1; EFGM; EGF1; hEFG1; COXPD1; mtEF-G1

Tel: 1-631-559-9269 1-516-512-3133

Email: info@creative-biomart.com Fax: 1-631-938-8127

45-1 Ramsey Road, Shirley, NY 11967, USA

Gene ID	85476
mRNA Refseq	NM_024996.7
Protein Refseq	NP_079272.4
MIM	606639
UniProt ID	Q96RP9



Coomassie blue staining of purified GFM1 protein.

Tel: 1-631-559-9269 1-516-512-3133

Email: info@creative-biomart.com Fax: 1-631-938-8127

45-1 Ramsey Road, Shirley, NY 11967, USA