

Recombinant Human GFM1 Protein, GST-tagged

Cat. No. GFM1-4852H Lot. No. (See product label)

SPECIFICATION

Product Overview	Human GFM1 full-length ORF (NP_079272.4, 1 a.a. - 751 a.a.) recombinant protein with GST-tag at N-terminal.
Species	Human
Source	Wheat Germ
Description	Eukaryotes contain two protein translational systems, one in the cytoplasm and one in the mitochondria. Mitochondrial translation is crucial for maintaining mitochondrial function and mutations in this system lead to a breakdown in the respiratory chain-oxidative phosphorylation system and to impaired maintenance of mitochondrial DNA. This gene encodes one of the mitochondrial translation elongation factors. Its role in the regulation of normal mitochondrial function and in different disease states attributed to mitochondrial dysfunction is not known. [provided by RefSeq
Molecular Mass	109.9 kDa
AA Sequence	MRLLGAAVAALGRGRAPASLGWQRKQVNWKACRWSSSGVIPNEKIRNIGISAHID SGKTTLTERVLYYTGRIAKMHEVKGKDGVGAVMDSMELERQRGITIQSAATYTMWK DVNINIIDTPGHVDFTIEVERALRVLGDGAVLVLCVGGVQCQTMTVNRQMKRYNVPF LTFINKLDRMGSNPARALQQMRSKLNHNAAFQIPMGLEGNFKGIVDLIEERAIYFD GDFGQIVRYGEIPAELRAAATDHRQELIECVANSDEQLGEMFLEEKIPSISDLKLAIRR ATLKRSFTPVFLGSALKNKGVQPLLDVLEYPNPSEVQNYAILNKEDDSKEKTKILM NSSRDNSHPFVGLAFKLEVGRFGQLTYVRSYQGELKKGDTIYNTRTRKKVRLQRLA

 Tel: 1-631-559-9269 1-516-512-3133

 Email: info@creative-biomart.com  Fax: 1-631-938-8127

 45-1 Ramsey Road, Shirley, NY 11967, USA

RMHADMMEDVEEVYAGDICALFGIDCASGDTFTDKANSGLSMESIHVPDPVISIAMK
 PSNKNDLEKFSKGIGRFTREDPTFKVYFDTENKETVISGMGELHLEIYAQRLEREYG
 CPCITGKPKVAFRETITAPVPDFTHKKQSGGAGQYGKVIQVLEPLDPEDYTKLEFSD
 ETFGSNIPKQFVPAVEKGFLDACEKGPLSGHKLGLRFVLQDGAHHMVDSNEISFIR
 AGEKALKQALANATLTCILEPIMAVEVVAPNEFQQQVIAGINRRRHGVITGQDGVEDYFT
 LYADVPLNDMFGYSTEELRSCTEGKGEYTMESRYQPCLPSTQEDVINKYLEATGQL
 PVKKGKAKN

Applications	Enzyme-linked Immunoabsorbent Assay Western Blot (Recombinant protein) Antibody Production Protein Array
---------------------	---

Notes	Best use within three months from the date of receipt of this protein.
--------------	--

Storage	Store at -80 centigrade. Aliquot to avoid repeated freezing and thawing.
----------------	--

Storage Buffer	50 mM Tris-HCl, 10 mM reduced Glutathione, pH=8.0 in the elution buffer.
-----------------------	--

GENE INFORMATION

Gene Name	GFM1 G elongation factor, mitochondrial 1 [Homo sapiens]
------------------	--

Official Symbol	GFM1
------------------------	------

Synonyms	GFM1; G elongation factor, mitochondrial 1; G translation elongation factor, mitochondrial; elongation factor G, mitochondrial; EFGM; EGF1; GFM; EF-Gmt; mEF- G 1; elongation factor G1; mitochondrial elongation factor G; mitochondrial elongation factor G1; elongation factor G 1, mitochondrial; EFG; EFG1; hEFG1; COXPD1; FLJ12662; FLJ13632; FLJ20773;
-----------------	---

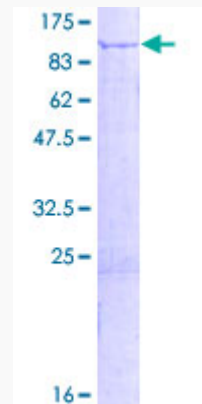
 Tel: 1-631-559-9269 1-516-512-3133

 Email: info@creative-biomart.com  Fax: 1-631-938-8127

 45-1 Ramsey Road, Shirley, NY 11967, USA

Gene ID	85476
mRNA Refseq	NM_024996
Protein Refseq	NP_079272
MIM	606639
UniProt ID	Q96RP9

**Quality Control
Testing**



12.5% SDS-PAGE Stained with Coomassie Blue.

 Tel: 1-631-559-9269 1-516-512-3133

 Email: info@creative-biomart.com  Fax: 1-631-938-8127

 45-1 Ramsey Road, Shirley, NY 11967, USA