

Recombinant Human GFM2 protein, His & T7-tagged

Cat. No. GFM2-1731H Lot. No. (See product label)

SPECIFICATION

Product Overview	Recombinant Human GFM2 aa. (Asn570~Thr779 (Accession # Q969S9)) fused with N-terminal His & T7 tag was produced in E. coli cells.
Species	Human
Source	E.coli
ProteinLength	Asn570~Thr779
Description	<p>Eukaryotes contain two protein translational systems, one in the cytoplasm and one in the mitochondria. Mitochondrial translation is crucial for maintaining mitochondrial function and mutations in this system lead to a breakdown in the respiratory chain-oxidative phosphorylation system and to impaired maintenance of mitochondrial DNA. This gene encodes one of the mitochondrial translation elongation factors, which is a GTPase that plays a role at the termination of mitochondrial translation by mediating the disassembly of ribosomes from messenger RNA . Its role in the regulation of normal mitochondrial function and in disease states attributed to mitochondrial dysfunction is not known. Alternative splicing results in multiple transcript variants encoding distinct isoforms.</p>
Form	Freeze-dried powder
Molecular Mass	Predicted Molecular Mass: 26.6kDa
Endotoxin	<1.0EU per 1ug (determined by the LAL method)

 Tel: 1-631-559-9269 1-516-512-3133

 Email: info@creative-biomart.com  Fax: 1-631-938-8127

 45-1 Ramsey Road, Shirley, NY 11967, USA

Purity	>90%
Applications	SDS-PAGE; WB; ELISA; IP.
Stability	The thermal stability is described by the loss rate. The loss rate was determined by accelerated thermal degradation test, that is, incubate the protein at 37°C for 48h, and no obvious degradation and precipitation were observed. The loss rate is less than 5% within the expiration date under appropriate storage condition.
Storage	Avoid repeated freeze/thaw cycles. Store at 2-8°C for one month. Aliquot and store at -80°C for 12 months.
Storage buffer	Supplied as lyophilized form in 20mM Tris, 150mM NaCl, pH8.0, containing 1mM EDTA, 1mM DTT, 0.01% sarcosyl, 5% trehalose, and preservative.
Reconstitution	Reconstitute in sterile ddH ₂ O.
Isoelectric Point	5.6

GENE INFORMATION

Gene Name	GFM2 G elongation factor mitochondrial 2 [Homo sapiens (human)]
Official Symbol	GFM2
Synonyms	GFM2; G elongation factor mitochondrial 2; EFG2; RRF2; MRRF2; hEFG2; MST027; RRF2mt; EF-G2mt; MSTP027; mEF-G 2; ribosome-releasing factor 2, mitochondrial; mitochondrial elongation factor G2; mitochondrial ribosome recycling factor 2
Gene ID	84340

 Tel: 1-631-559-9269 1-516-512-3133

 Email: info@creative-biomart.com  Fax: 1-631-938-8127

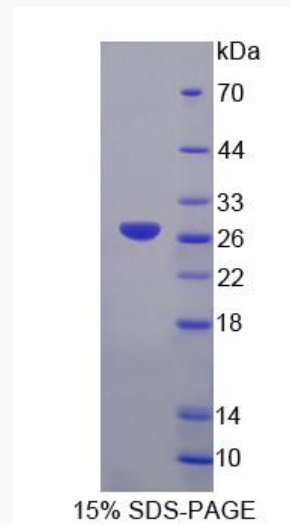
 45-1 Ramsey Road, Shirley, NY 11967, USA

mRNA Refseq [NM_032380.4](#)

Protein Refseq [NP_115756.2](#)

UniProt ID [Q969S9](#)

SDS-PAGE



 Tel: 1-631-559-9269 1-516-512-3133

 Email: info@creative-biomart.com  Fax: 1-631-938-8127

 45-1 Ramsey Road, Shirley, NY 11967, USA