

Recombinant Human GFM2 Protein, Myc/DDK-tagged, C13 and N15-labeled

Cat. No. GFM2-4459H **Lot. No.** (See product label)

SPECIFICATION

Product Overview	GFM2 MS Standard C13 and N15-labeled recombinant protein (NP_115756) with a C-terminal MYC/DDK tag, was expressed in HEK293 cells.
Species	Human
Source	HEK293
Description	Eukaryotes contain two protein translational systems, one in the cytoplasm and one in the mitochondria. Mitochondrial translation is crucial for maintaining mitochondrial function and mutations in this system lead to a breakdown in the respiratory chain-oxidative phosphorylation system and to impaired maintenance of mitochondrial DNA. This gene encodes one of the mitochondrial translation elongation factors, which is a GTPase that plays a role at the termination of mitochondrial translation by mediating the disassembly of ribosomes from messenger RNA. Its role in the regulation of normal mitochondrial function and in disease states attributed to mitochondrial dysfunction is not known. Alternative splicing results in multiple transcript variants encoding distinct isoforms.
Molecular Mass	86.2 kDa
AA Sequence	MLTNLRIFAMSHQTIPSVYINNCCYKIRASLKRLKPHVPLGRNCSSLPGLIGNDIKSIH SIINPPIAKIRNIGIMAHIDAGKTTTTTERILYYSGYTRSLGDVDDGDTVDFMAQERER GITIQSAAVTFDWKGYRVNLIDTPGHVDFTLLEVERCLRVLDGAVAVFDASAGVEAQT

 Tel: 1-631-559-9269 1-516-512-3133

 Email: info@creative-biomart.com  Fax: 1-631-938-8127

 45-1 Ramsey Road, Shirley, NY 11967, USA

LTVWRQADKHNIPRICFLNKMDKTGASFKYAVESIREKLKAKPLLLQLPIGEAKTFKG
 VVDVVMKEKLLWNCNSNDGKDFERKPLLEMNDPELLKETTEARNALIEQVADLDDE
 FADLVLEEFSENFDLLPAEKLQTAIHRVTLAQTAVPVLCGSALKKNKGIQPLLDVATMY
 LPSPEERNYEFQWYKDDLCALAFKVLHDKQRGPLVFMRIYSGTIKPLAIHNINGNC
 TERISRLLLPFADQHVEIHSLTAGNIALTVGLKHTATGDTIVSSKSSALAAARRAEREG
 EKKHRQNNEAERLLLAGVEIPEPVFFCTIEPPSLSKQPDLEHALKCLQREDPSLKVRL
 DPDSGQTVLCGMGELHIEIIHDRIKREYGLETYLGPLQVAYRETILNSVRATDLDRTL
 GDKRHLVTVEVGARPIETSSVMPVIEYAESINEGLLKVSQEIENGIHSACLQGPLLG
 SPIQDVAITLHSLTIHPGTSTTMISACVSRVCQKALKKADKQVLEPLMNLEVTVARDYL
 SPVLADLAQRRGNIQEIQTRQDNKVVIGFVPLAGIMGYSTVLRTLTSGSATFALELST
 YQAMNPQDQNTLLNRRSGLTTRTRPLEQKLISEEDLAANDILDYKDDDDKV

Purity > 80% as determined by SDS-PAGE and Coomassie blue staining

Stability Stable for 3 months from receipt of products under proper storage and handling conditions.

Storage Store at -80 centigrade. Avoid repeated freeze-thaw cycles.

Concentration 50 µg/mL as determined by BCA

Storage Buffer 100 mM glycine, 25 mM Tris-HCl, pH 7.3.

GENE INFORMATION

Gene Name [GFM2 GTP dependent ribosome recycling factor mitochondrial 2 \[Homo sapiens \(human\) \]](#)

Official Symbol [GFM2](#)

Synonyms GFM2; G elongation factor, mitochondrial 2; ribosome-releasing factor 2,

 Tel: 1-631-559-9269 1-516-512-3133

 Email: info@creative-biomart.com  Fax: 1-631-938-8127

 45-1 Ramsey Road, Shirley, NY 11967, USA

mitochondrial; EFG2; FLJ21661; MSTP027; mitochondrial elongation factor G2; elongation factor G 2, mitochondrial; mitochondrial ribosome recycling factor 2; RRF2; MRRF2; hEFG2; MST027; RRF2mt; EF-G2mt; mEF-G 2;

Gene ID [84340](#)

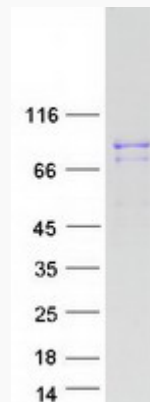
mRNA Refseq [NM_032380](#)

Protein Refseq [NP_115756](#)

MIM [606544](#)

UniProt ID [Q969S9](#)

SDS-PAGE



 Tel: 1-631-559-9269 1-516-512-3133

 Email: info@creative-biomart.com  Fax: 1-631-938-8127

 45-1 Ramsey Road, Shirley, NY 11967, USA