

## Recombinant Human GFM2 Protein, GST-tagged

Cat. No. GFM2-4854H Lot. No. (See product label)

### SPECIFICATION

**Product Overview** Human GFM2 full-length ORF ( NP\_115756.2, 1 a.a. - 779 a.a.) recombinant protein with GST-tag at N-terminal.

**Species** Human

**Source** Wheat Germ

**Description** Eukaryotes contain two protein translational systems, one in the cytoplasm and one in the mitochondria. Mitochondrial translation is crucial for maintaining mitochondrial function and mutations in this system lead to a breakdown in the respiratory chain-oxidative phosphorylation system and to impaired maintenance of mitochondrial DNA. This gene encodes one of mitochondrial translation elongation factors. Its role in the regulation of normal mitochondrial function and in different disease states attributed to mitochondrial dysfunction is not known. Alternative splicing results in at least three transcript variants encoding distinct isoforms. [provided by RefSeq]

**Molecular Mass** 113 kDa

**AA Sequence** MLTNLRIFAMSHQTIPSVYINNCCYKIRASLKRLKPHVPLGRNCSSLPGLIGNDIKSLH  
SIINPPIAKIRNIGIMAHIDAGKTTTTTERILYYSGYTRSLGDVDDGDTVDFMAQERER  
GITIQSAAVTFDWKGYRVNLIDTPGHVDFTLIVERCLRVLDGAVAVFDASAGVEAQT  
LTVWRQADKHNIPRICFLNKMDKTGASFYAVESIREKLKAKPLLLQLPIGEAKTFKG  
VVDVVMKEKLLWNCNSNDGKDFERKPLLEMNDPELLKETTEARNALIEQVADLDDE  
FADLVLEEFSENFDLLPAEKLQTAIHRVTLAQTAVPVLCGSALKNKGIQPLLDVATMY

 Tel: 1-631-559-9269 1-516-512-3133

 Email: [info@creative-biomart.com](mailto:info@creative-biomart.com)  Fax: 1-631-938-8127

 45-1 Ramsey Road, Shirley, NY 11967, USA

LPSPEERNYEFLQWYKDDLCALAFKVLHDKQRGPLVFMRIYSGTIKPQLAIHNINGNC  
 TERISRLLLPFADQHVEIPSLTAGNIALTVGLKHTATGDTIVSSKSSALAAARRAEREG  
 EKKHRQNNEAERLLLAGVEIPEPVFFCTIEPPSLSKQPDLEHALKCLQREDPSLKVRL  
 DPDSGQTVLCGMGELHIEIIHDRIKREYGLETYLGLPLQVAYRETILNSVRATDLDRTL  
 GDKRHLVTVEVEARPIETSSVMPVIEFEYAESINEGLLKVSQEAIENGIHSACLQGPLL  
 GSPIQDVAILHSLTIHPGTSTTMISACVSRVCQKALKKADKQVLEPLMNLEVTVARD  
 YLSPVLADLAQRRGNIQEIQTRQDNKVVIGFVPLAEIMGYSTVLRLTSGSATFALELS  
 TYQAMNPQDQNTLLNRRSGLT

**Applications**

Enzyme-linked Immunoabsorbent Assay  
 Western Blot (Recombinant protein)  
 Antibody Production  
 Protein Array

**Notes**

Best use within three months from the date of receipt of this protein.

**Storage**

Store at -80 centigrade. Aliquot to avoid repeated freezing and thawing.

**Storage Buffer**

50 mM Tris-HCl, 10 mM reduced Glutathione, pH=8.0 in the elution buffer.

## GENE INFORMATION

**Gene Name**

GFM2 G elongation factor, mitochondrial 2 [ [Homo sapiens](#) ]

**Official Symbol**

GFM2

**Synonyms**

GFM2; G elongation factor, mitochondrial 2; ribosome-releasing factor 2, mitochondrial; EFG2; FLJ21661; MSTP027; mitochondrial elongation factor G2; elongation factor G 2, mitochondrial; mitochondrial ribosome recycling factor 2; RRF2; MRRF2; hEFG2; MST027; RRF2mt; EF-G2mt; mEF-G 2;

 Tel: 1-631-559-9269 1-516-512-3133

 Email: [info@creative-biomart.com](mailto:info@creative-biomart.com)  Fax: 1-631-938-8127

 45-1 Ramsey Road, Shirley, NY 11967, USA

Gene ID 84340

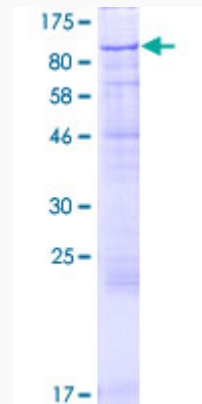
mRNA Refseq NM\_032380

Protein Refseq NP\_115756

MIM 606544

UniProt ID Q969S9

**Quality Control  
Testing**



12.5% SDS-PAGE Stained with Coomassie Blue.

 Tel: 1-631-559-9269 1-516-512-3133

 Email: [info@creative-biomart.com](mailto:info@creative-biomart.com)  Fax: 1-631-938-8127

 45-1 Ramsey Road, Shirley, NY 11967, USA