

Recombinant Human GFOD1 Protein, Myc/DDK-tagged, C13 and N15-labeled

Cat. No. GFOD1-1816H Lot. No. (See product label)

SPECIFICATION

Product Overview

GFOD1 MS Standard C13 and N15-labeled recombinant protein (NP_061861) with a C-terminal MYC/DDK tag, was expressed in HEK293 cells.

Species

Human

Source

HEK293

Description

GFOD1 (Glucose-Fructose Oxidoreductase Domain Containing 1) is a Protein Coding gene. Diseases associated with GFOD1 include Attention Deficit-Hyperactivity Disorder. Gene Ontology (GO) annotations related to this gene include oxidoreductase activity. An important paralog of this gene is GFOD2.

Molecular Mass

43 kDa

AA Sequence

MLPGVGVFGTSLTARVIIPLLKDEGFAVKALWGRTQEEAEELAKEMSVPFYTSRIDEV
 LLHQVDVLDVCINLPPPLTRQIAVKTLGIGKNVICDRTATPLDAFRMTSAAHYYPKLMSI
 MGNVLRFLPAFVRMKQLIEEGYVGEPLVCEVQVHGGSLGKKNWSCDDLMMGGGG
 LHSVGTYYIDLLTFLTGQKAVKVHGLLKTFVKQTDHIKIRQITSDDFCTFQMVLEGGV
 CCTVTLNFNVPGEFKQDVTVVGSAGRLLAVGTDLYGQRNSAPEQELLVQDATPVSN
 SLLPEKAFSDIPSPYLRGTIKMMQAVRQAFQDQDDRRTWDGRPLTMAATFDDCLYA
 LCVVDTIKRSSQTGEWQNIAMTEPELSPAYLISEAMRRSRMSLYCTRTRPLEQKLI
 SEEDLAANDILDYKDDDDKV

Purity

> 80% as determined by SDS-PAGE and Coomassie blue staining

 Tel: 1-631-559-9269 1-516-512-3133

 Email: info@creative-biomart.com  Fax: 1-631-938-8127

 45-1 Ramsey Road, Shirley, NY 11967, USA

Stability	Stable for 3 months from receipt of products under proper storage and handling conditions.
Storage	Store at -80 centigrade. Avoid repeated freeze-thaw cycles.
Concentration	50 µg/mL as determined by BCA
Storage Buffer	100 mM glycine, 25 mM Tris-HCl, pH 7.3.

GENE INFORMATION

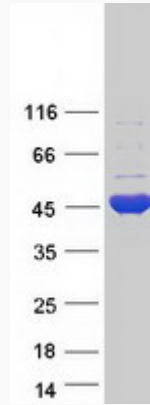
Gene Name	GFOD1 glucose-fructose oxidoreductase domain containing 1 [Homo sapiens (human)]
Official Symbol	GFOD1
Synonyms	GFOD1; glucose-fructose oxidoreductase domain containing 1; C6orf114, chromosome 6 open reading frame 114; glucose-fructose oxidoreductase domain-containing protein 1; ADG 90; FLJ20330; ADG-90; C6orf114; FLJ30569; MGC70653; RP11-501119.1;
Gene ID	54438
mRNA Refseq	NM_018988
Protein Refseq	NP_061861
UniProt ID	Q9NXC2

 Tel: 1-631-559-9269 1-516-512-3133

 Email: info@creative-biomart.com  Fax: 1-631-938-8127

 45-1 Ramsey Road, Shirley, NY 11967, USA

SDS-PAGE



 Tel: 1-631-559-9269 1-516-512-3133

 Email: info@creative-biomart.com  Fax: 1-631-938-8127

 45-1 Ramsey Road, Shirley, NY 11967, USA