

Recombinant Full Length Human GFOD2 Protein, C-Flag-tagged

Cat. No. GFOD2-1809HFL **Lot. No.** (See product label)

SPECIFICATION

Product Overview

Recombinant Full Length Human GFOD2 Protein, fused to Flag-tag at C-terminus, was expressed in Mammalian cells.

Species

Human

Source

Mammalian Cells

Description

Predicted to enable nucleotide binding activity and oxidoreductase activity. Predicted to be involved in extracellular matrix organization. Predicted to be located in extracellular region. Predicted to be active in extracellular matrix.

Form

25 mM Tris HCl, pH 7.3, 100 mM glycine, 10% glycerol.

Molecular Mass

42.1 kDa

AA Sequence

```

MKMLPGVGVFGTGSSARVLVPLLRAEGFTVEALWGKTEEEAKQLAEEMNIAFYTSR
TDDILLHQVDVLC ISIPPPLTRQISVKALGIGKNVCEKAATSVDAFRMVTASRYYP
QLMSLVGNVLRFLPAFVRMKQLISEH YVGAVMICDARIYSGSLLSPSYGWICDELMG
GGGLHTMGTYIVDLLTHLTGRRAEKVHGLLKTFRQNAA IRGIRHVTSDDFCFFQML
MGGGVCSTVTLNFNMPGAFVHEVMVVGSAAGLVARGADLYGQKNSATQEELL LR
DSLAVGAGLPEQGPQDVPLLYLKGMVYMQALRQSFQGGDRRTWDRTPVSMMAA
SFEDGLYMQSVVDA
IKRSSRSGEWEAVEVLTEEPDTNQNLCEALQRNNLTRTRPLEQKLISEEDLAANDILD
YKDDDDKV
    
```

 Tel: 1-631-559-9269 1-516-512-3133

 Email: info@creative-biomart.com  Fax: 1-631-938-8127

 45-1 Ramsey Road, Shirley, NY 11967, USA

Purity	> 80% as determined by SDS-PAGE and Coomassie blue staining.
Stability	Stable for 12 months from the date of receipt of the product under proper storage and handling conditions. Avoid repeated freeze-thaw cycles.
Storage	Store at -80 centigrade.
Concentration	>50 ug/mL as determined by microplate BCA method.
Preparation	Recombinant protein was captured through anti-DDK affinity column followed by conventional chromatography steps.
Full Length	Full L.

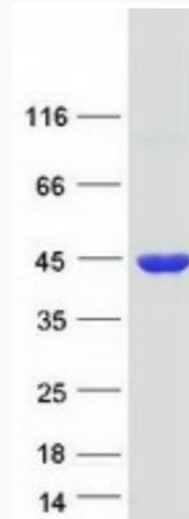
GENE INFORMATION

Gene Name	GFOD2 glucose-fructose oxidoreductase domain containing 2 [Homo sapiens (human)]
Official Symbol	GFOD2
Gene ID	81577
mRNA Refseq	NM_030819.4
Protein Refseq	NP_110446.3
MIM	619933
UniProt ID	Q3B7J2

 Tel: 1-631-559-9269 1-516-512-3133

 Email: info@creative-biomart.com  Fax: 1-631-938-8127

 45-1 Ramsey Road, Shirley, NY 11967, USA



Coomassie blue staining of purified GFOD2 protein.

 Tel: 1-631-559-9269 1-516-512-3133

 Email: info@creative-biomart.com  Fax: 1-631-938-8127

 45-1 Ramsey Road, Shirley, NY 11967, USA