

Recombinant Human GFOD2 Protein, Myc/DDK-tagged, C13 and N15-labeled

Cat. No. GFOD2-5508H Lot. No. (See product label)

SPECIFICATION

Product Overview

GFOD2 MS Standard C13 and N15-labeled recombinant protein (NP_110446) with a C-terminal MYC/DDK tag, was expressed in HEK293 cells.

Species

Human

Source

HEK293

Description

GFOD2 (Glucose-Fructose Oxidoreductase Domain Containing 2) is a Protein Coding gene. Diseases associated with GFOD2 include Maple Syrup Urine Disease. Gene Ontology (GO) annotations related to this gene include oxidoreductase activity. An important paralog of this gene is GFOD1.

Molecular Mass

42.3 kDa

AA Sequence

MKMLPGVGVFGTGSSARVLVPLLRAEGFTVEALWKGKTEEEAKQLAEEMNIAFYTSR
 TDDILLHQVDLVCISIPPLTRQISVKALGIGKNVCEKAATSVDAFRMTASRYYPQ
 LMSLVGNVLRFLPAFVRMKQLISEHYVGAVMICDARIYSGSLLSPSYGWICDELMGG
 GGLHTMGTYIVDLLTHLTGRRAEKVHGLLKTFRVQRNAAIRGIRHVTSDDFCFFQMLM
 GGGVCSTVTLNFMMPGAFVHEVMVVGSAAGRLVARGADLYGQKNSATQEELLRDS
 LAVGAGLPEQGPQDVPLLYLKGMVYMQALRQSFQGGDRRTWDRTPVSMASF
 EDGLYMQSVVDAIKRSSRSGEWEAVEVLTEEPDTNQNLCEALQRNNLTRTRPLEQK
 LISEEDLAANDILDYKDDDDKV

Purity

> 80% as determined by SDS-PAGE and Coomassie blue staining

 Tel: 1-631-559-9269 1-516-512-3133

 Email: info@creative-biomart.com  Fax: 1-631-938-8127

 45-1 Ramsey Road, Shirley, NY 11967, USA

Stability	Stable for 3 months from receipt of products under proper storage and handling conditions.
Storage	Store at -80 centigrade. Avoid repeated freeze-thaw cycles.
Concentration	50 µg/mL as determined by BCA
Storage Buffer	100 mM glycine, 25 mM Tris-HCl, pH 7.3.

GENE INFORMATION

Gene Name	GFOD2 glucose-fructose oxidoreductase domain containing 2 [Homo sapiens (human)]
Official Symbol	GFOD2
Synonyms	GFOD2; glucose-fructose oxidoreductase domain containing 2; glucose-fructose oxidoreductase domain-containing protein 2; FLJ23802; MGC11335; FLJ39316;
Gene ID	81577
mRNA Refseq	NM_030819
Protein Refseq	NP_110446
UniProt ID	Q3B7J2

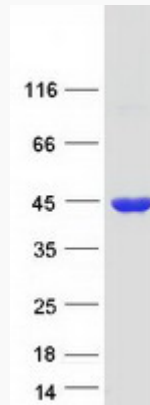
 Tel: 1-631-559-9269 1-516-512-3133

 Email: info@creative-biomart.com  Fax: 1-631-938-8127

 45-1 Ramsey Road, Shirley, NY 11967, USA



SDS-PAGE



Tel: 1-631-559-9269 1-516-512-3133

Email: info@creative-biomart.com Fax: 1-631-938-8127

45-1 Ramsey Road, Shirley, NY 11967, USA