

## Recombinant GFP Protein

Cat. No. GFP-02 Lot. No. (See product label)

### SPECIFICATION

|                         |  |
|-------------------------|--|
| <b>Product Overview</b> | Recombinant GFP Protein was expressed in E. coli.  |
| <b>Source</b>           | E.coli   |
| <b>Description</b>      | Protein NARROW LEAF 1  |
| <b>Form</b>             | Supplied as a 0.2 µm filtered solution in 10 mM PBS (pH 7.4).  |
| <b>AA Sequence</b>      | SMSKGEELFTGVVPILVELDGDVNGHKFSVSGEGEGDATYGKLTCLKFICTTGKLPVP<br>WPTLVTTFSYGVCFSRYPDHMKQHDFFKSAMPEGYVQERTIFFKDDGNYKTRAE<br>VKFEGDTLVNRIELKGIDFKEDGNILGHKLEYNYNSHNVYIMADKQKNGIKVNFKIRH<br>NIEDGSVQLADHYQQNTPIGDGPVLLPDNHYLSTQSALS KDPNEKRDHMLLEFVTA<br>AGITHGMDELYKTRTRPLEQKLISEEDLAANDILDYKDDDDKV |
| <b>Endotoxin</b>        | <1.0 EU per ug (determined by the LAL method)  |
| <b>Purity</b>           | >95% by SDS-PAGE   |
| <b>Storage</b>          | Store at 2-8 centigrade for one month. Aliquot and store at -80 centigrade for 12 months. Avoid repeated freeze-thaw cycles.   |
| <b>Concentration</b>    | 0.4 mg/ml  |

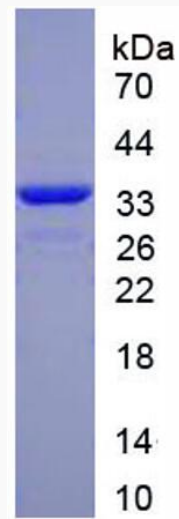
### GENE INFORMATION

 Tel: 1-631-559-9269 1-516-512-3133

 Email: [info@creative-biomart.com](mailto:info@creative-biomart.com)  Fax: 1-631-938-8127

 45-1 Ramsey Road, Shirley, NY 11967, USA

|                        |   |
|------------------------|---|
| <b>Gene Name</b>       | NAL1 Protein NARROW LEAF 1 [ <i>Oryza sativa</i> Japonica Group (Japanese rice) ] |
| <b>Official Symbol</b> | GFP   |
| <b>Synonyms</b>        | GFP; SPIKE; qFLW4; LSCHL4; OsJ_16147  |
| <b>Gene ID</b>         | 4336986   |
| <b>mRNA Refseq</b>     | NM_001419864.1  |
| <b>Protein Refseq</b>  | NP_001406793.1  |
| <b>UniProt ID</b>      | P42212  |

**SDS-PAGE**

SDS-PAGE analysis of purified GFP

 Tel: 1-631-559-9269 1-516-512-3133 Email: [info@creative-biomart.com](mailto:info@creative-biomart.com)  Fax: 1-631-938-8127 45-1 Ramsey Road, Shirley, NY 11967, USA