

Recombinant Human GFPT1 protein

Cat. No. GFPT1-885H Lot. No. (See product label)

SPECIFICATION

Product Overview	Recombinant Human GFPT1 protein(Gln 332-Glu 699) of human GFAT (AAA58502.1) was expressed and purified in E. coli with two amino acids (Gly & Pro) at the N-terminus.
Species	Human
Source	E. coli
ProteinLength	332-699 aa
Form	Lyophilized from sterile PBS, pH 7.4, 10% glycerol.
Molecular Mass	The recombinant human GFAT exists as a homotetramer protein. The GFAT monomer consists of 370 amino acids and predicts a molecular mass of 41.5 kDa as estimated in SDS-PAGE under reducing conditions.
Purity	> 97 % as determined by SDS-PAGE
Storage	Store it under sterile conditions at -20°C to -80°C upon receiving. Recommend to aliquot the protein into smaller quantities for optimal storage. Avoid repeated freeze-thaw cycles.
Reconstitution	It is recommended that sterile water be added to the vial to prepare a stock solution of 0.2 ug/ul. Centrifuge the vial at 4°C before opening to recover the entire contents.

 Tel: 1-631-559-9269 1-516-512-3133

 Email: info@creative-biomart.com  Fax: 1-631-938-8127

 45-1 Ramsey Road, Shirley, NY 11967, USA

protein Refseq-Weblink http://www.ncbi.nlm.nih.gov/protein/NP_001231639.1

Unit ID Q06210

Unit ID-Weblink <https://www.uniprot.org/uniprotkb/Q06210>

GENE INFORMATION

Gene Name [GFPT1 glutamine--fructose-6-phosphate transaminase 1 \[Homo sapiens \]](#)

Official Symbol [GFPT1](#)

Synonyms GFPT1; glutamine--fructose-6-phosphate transaminase 1; GFPT, glutamine fructose 6 phosphate transaminase 1; glucosamine--fructose-6-phosphate aminotransferase [isomerizing] 1; GFA; GFAT; GFAT1; hexosephosphate aminotransferase 1; D-fructose-6-phosphate amidotransferase 1; glutamine:fructose 6 phosphate amidotransferase 1; GFPT; GFAT 1; GFAT1m;

Gene ID [2673](#)

mRNA Refseq [NM_001244710](#)

protein Refseq NP_001231639

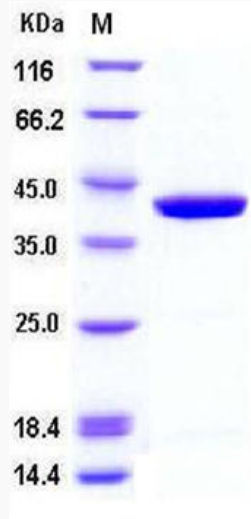
MIM [138292](#)

 Tel: 1-631-559-9269 1-516-512-3133

 Email: info@creative-biomart.com  Fax: 1-631-938-8127

 45-1 Ramsey Road, Shirley, NY 11967, USA

SDS-PAGE



 Tel: 1-631-559-9269 1-516-512-3133

 Email: info@creative-biomart.com  Fax: 1-631-938-8127

 45-1 Ramsey Road, Shirley, NY 11967, USA