

## Recombinant Human GFPT2 Protein, GST-tagged

Cat. No. GFPT2-4859H Lot. No. (See product label)

### SPECIFICATION

<b>Product Overview</b>	Human GFPT2 full-length ORF ( AAH00012.1, 1 a.a. - 682 a.a.) recombinant protein with GST-tag at N-terminal.
<b>Species</b>	Human
<b>Source</b>	Wheat Germ
<b>Description</b>	GFPT2 (Glutamine-Fructose-6-Phosphate Transaminase 2) is a Protein Coding gene. Diseases associated with GFPT2 include Pancreatic Steatorrhea and Lipodystrophy, Familial Partial, 2. Among its related pathways are Synthesis of substrates in N-glycan biosynthesis and Transport to the Golgi and subsequent modification. GO annotations related to this gene include carbohydrate binding and glutamine-fructose-6-phosphate transaminase (isomerizing) activity. An important paralog of this gene is GFPT1.
<b>Molecular Mass</b>	100.65 kDa
<b>AA Sequence</b>	MCGIFAYMNYRVPRTTRKEIFETLIKGLQRLEYRGYDSAGVAIDGNNHEVKERHIQLVK KRGKVKALDEELYKQDSMDLKVEFETHFGIAHTRWATHGVPSAVNSHPQRSKGN EFVVIHNGIITNYKDLRKFLKESKGYEFSESETDTETIAKLIKVFDNRETEDITFSTLVER VIQQLEGAFALVFKSVHYPGEAVATRRGSPLLIGVRSKYKLSTEQIPILYRTCTLENVK NICKTRMKRLDSSACLHAVGDKAVEFFFASDASAIIEHTNRVIFLEDDDIAAVADGKLS IHRVKRSASDDPSRAIQTLMELQQIMKGNFSAFMQKEIFEQPESVFNTMRGRVNFE TNTVLLGGLKDHLKEIRRCRRLVIGCGTSYHAAVATRQVLEELTELPVMVELASDFL DRNTPVFRDDVCFISQSGETADTLLALRYCKDRGALTVGVTNTVGSSISRETDCGV

 Tel: 1-631-559-9269 1-516-512-3133

 Email: [info@creative-biomart.com](mailto:info@creative-biomart.com)  Fax: 1-631-938-8127

 45-1 Ramsey Road, Shirley, NY 11967, USA

HINAGPEVGVASTKAYTSQFISLVMFGLMMSEDRLSQNRRQEIIIRGLRSLPELIKEVL  
 SLEEKIHDLALELYTQRSELLVMGRGYNYATCLEGALKIKEITYMHSEGILAGELKHGPL  
 ALIDKQMPVIMVIMKDPCKFAKQCQNALQQVTARQGRPIILCSKDDTESSKFAYKTIELP  
 HTVDCLQGILSVIPLQLLSFHFLAVLRGYDVFPRNLAKSVTVE

<b>Applications</b>	Enzyme-linked Immunoabsorbent Assay Western Blot (Recombinant protein) Antibody Production Protein Array
<b>Notes</b>	Best use within three months from the date of receipt of this protein.
<b>Storage</b>	Store at -80 centigrade. Aliquot to avoid repeated freezing and thawing.
<b>Storage Buffer</b>	50 mM Tris-HCl, 10 mM reduced Glutathione, pH=8.0 in the elution buffer.

## GENE INFORMATION

<b>Gene Name</b>	GFPT2 glutamine-fructose-6-phosphate transaminase 2 [ Homo sapiens ]
<b>Official Symbol</b>	GFPT2
<b>Synonyms</b>	GFPT2; glutamine-fructose-6-phosphate transaminase 2; glucosamine--fructose-6-phosphate aminotransferase [isomerizing] 2; GFAT2; glutamine: fructose 6 phosphate aminotransferase 2; GFAT 2; hexosephosphate aminotransferase 2; D-fructose-6-phosphate amidotransferase 2; glutamine:fructose 6 phosphate amidotransferase 2; glutamine: fructose-6-phosphate aminotransferase 2; FLJ10380;
<b>Gene ID</b>	9945
<b>mRNA Refseq</b>	NM_005110

 Tel: 1-631-559-9269 1-516-512-3133

 Email: [info@creative-biomart.com](mailto:info@creative-biomart.com)  Fax: 1-631-938-8127

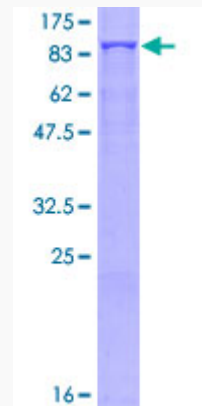
 45-1 Ramsey Road, Shirley, NY 11967, USA

**Protein Refseq** NP\_005101

**MIM** 603865

**UniProt ID** O94808

**Quality Control  
Testing**



12.5% SDS-PAGE Stained with Coomassie Blue.

 Tel: 1-631-559-9269 1-516-512-3133

 Email: [info@creative-biomart.com](mailto:info@creative-biomart.com)  Fax: 1-631-938-8127

 45-1 Ramsey Road, Shirley, NY 11967, USA