

Recombinant Human GFPT2 Protein, Myc/DDK-tagged

Cat. No. GFPT2-4890H Lot. No. (See product label)

SPECIFICATION

Product Overview	Recombinant protein of human glutamine-fructose-6-phosphate transaminase 2 (GFPT2) with a C-Myc/DDK tag was expressed in HEK293T.
Species	Human
Source	HEK293
Description	Controls the flux of glucose into the hexosamine pathway. Most likely involved in regulating the availability of precursors for N- and O-linked glycosylation of proteins.
Molecular Mass	76.8 kDa
Purity	> 80 % as determined by SDS-PAGE and Coomassie blue staining
Stability	Stable for 12 months from the date of receipt of the product under proper storage and handling conditions. Avoid repeated freeze-thaw cycles.
Storage	Store at -80 centigrade.
Concentration	>50 µg/mL as determined by microplate BCA method
Storage Buffer	25 mM Tris.HCl, pH 7.3, 100 mM glycine, 10% glycerol

GENE INFORMATION

 Tel: 1-631-559-9269 1-516-512-3133

 Email: info@creative-biomart.com  Fax: 1-631-938-8127

 45-1 Ramsey Road, Shirley, NY 11967, USA



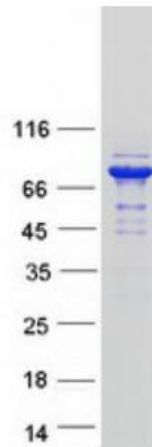
Gene Name	GFPT2 glutamine-fructose-6-phosphate transaminase 2 [Homo sapiens (human)]
Official Symbol	GFPT2
Synonyms	GFPT2; glutamine-fructose-6-phosphate transaminase 2; GFAT; GFAT2; GFAT 2; glutamine--fructose-6-phosphate aminotransferase [isomerizing] 2; D-fructose-6-phosphate amidotransferase 2; glucosamine--fructose-6-phosphate aminotransferase [isomerizing] 2; glutamine: fructose-6-phosphate aminotransferase 2; glutamine:fructose-6-phosphate amidotransferase 2; hexosephosphate aminotransferase 2; EC 2.6.1.16
Gene ID	9945
mRNA Refseq	NM_005110
Protein Refseq	NP_005101
MIM	603865
UniProt ID	O94808

Tel: 1-631-559-9269 1-516-512-3133

Email: info@creative-biomart.com Fax: 1-631-938-8127

45-1 Ramsey Road, Shirley, NY 11967, USA

SDS-PAGE



Coomassie blue staining of purified GFPT2 protein. The protein was produced from HEK293T cells transfected with GFPT2 cDNA clone

 Tel: 1-631-559-9269 1-516-512-3133

 Email: info@creative-biomart.com  Fax: 1-631-938-8127

 45-1 Ramsey Road, Shirley, NY 11967, USA