

Recombinant Human GFPT2 Protein, Myc/DDK-tagged, C13 and N15-labeled

Cat. No. GFPT2-5032H Lot. No. (See product label)

SPECIFICATION

Product Overview	GFPT2 MS Standard C13 and N15-labeled recombinant protein (NP_005101) with a C-terminal MYC/DDK tag, was expressed in HEK293 cells.
Species	Human
Source	HEK293
Description	Controls the flux of glucose into the hexosamine pathway. Most likely involved in regulating the availability of precursors for N- and O-linked glycosylation of proteins.
Molecular Mass	76.9 kDa
AA Sequence	<p>MCGIFAYMNYRVPRTTRKEIFETLIKGLQRLEYRGYDSAGVAIDGNNHEVKERHIQLVK KRGKVKALDEELYKQDSMDLKVEFETHFGIAHTRWATHGVPSAVNSHPQRSKGN EFVVIHNGIITNYKDLRKFLSKGYEFESSETDTETIAKLIKVFDNRETDITFSTLVER VIQQLGAFALVFKSVHYHPGEAVATRRGSPLLIGVRSKYKLSTEQIPILYRTCTLENVK NICKTRMKRLDSSACLHAVGDKAVEFFFASDASAIIEHTNRVIFLEDDDIAAVADGKLS IHRVKRSASDDPSRAIQTLQMELQQIMKGNFSAFMQKEIFEQPESVFNTMRGRVNFE TNTVLLGGLKDHLKEIRRCRRLVIGCGTSYHAAVATRQVLEELTELPVMVELASDFL DRNTPVFRDDVCFISQSGETADTLALRYCKDRGALTVGVTNTVGGSSISRETDCGV HINAGPEVGVASTKAYTSQFISLVMFGLMMSEDRISLQNRQRQEIIRGLRSLPELIKEVL SLEEKIHDLALELYTQRSLVMGRGYNYATCLEGALKIKEITYMHSEGILAGELKHGPL ALIDKQMPVIMVIMKDPCKFAKQCQNALQQVTARQGRPIILCSKDDTESSKFAYKTIELP</p>

 Tel: 1-631-559-9269 1-516-512-3133

 Email: info@creative-biomart.com  Fax: 1-631-938-8127

 45-1 Ramsey Road, Shirley, NY 11967, USA

HTVDCLQGILSVIPLQLLSFHLAVLRGYDVDFPRNLAKSVTVETRTRPLEQKLISEEDL
AANDILDYKDDDDKV

Purity > 80% as determined by SDS-PAGE and Coomassie blue staining

Stability Stable for 3 months from receipt of products under proper storage and handling conditions.

Storage Store at -80 centigrade. Avoid repeated freeze-thaw cycles.

Concentration 50 µg/mL as determined by BCA

Storage Buffer 100 mM glycine, 25 mM Tris-HCl, pH 7.3.

GENE INFORMATION

Gene Name GFPT2 glutamine-fructose-6-phosphate transaminase 2 [Homo sapiens (human)]

Official Symbol GFPT2

Synonyms GFPT2; glutamine-fructose-6-phosphate transaminase 2; glucosamine--fructose-6-phosphate aminotransferase [isomerizing] 2; GFAT2; glutamine: fructose 6 phosphate aminotransferase 2; GFAT 2; hexosephosphate aminotransferase 2; D-fructose-6-phosphate amidotransferase 2; glutamine:fructose 6 phosphate amidotransferase 2; glutamine: fructose-6-phosphate aminotransferase 2; FLJ10380;

Gene ID 9945

mRNA Refseq NM_005110

Protein Refseq NP_005101

 Tel: 1-631-559-9269 1-516-512-3133

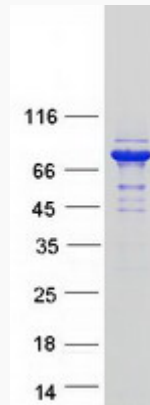
 Email: info@creative-biomart.com  Fax: 1-631-938-8127

 45-1 Ramsey Road, Shirley, NY 11967, USA

MIM 603865

UniProt ID O94808

SDS-PAGE



 Tel: 1-631-559-9269 1-516-512-3133

 Email: info@creative-biomart.com  Fax: 1-631-938-8127

 45-1 Ramsey Road, Shirley, NY 11967, USA