

# Recombinant human GDNF family receptor alpha 1 protein, Fc tagged

**Cat. No.** GFRA1-09H    **Lot. No.** (See product label)

## SPECIFICATION

**Product Overview**      Recombinant human GFR alpha-1 (25-424aa), fused to hlgG-tag at C-terminus, was expressed in HEK293 cell and purified by using conventional chromatography techniques.

**Species**      Human

**Source**      HEK293

**ProteinLength**      25-424aa


**Description**      This gene encodes a member of the glial cell line-derived neurotrophic factor receptor (GDNFR) family of proteins. The encoded preproprotein is proteolytically processed to generate the mature receptor. Glial cell line-derived neurotrophic factor (GDNF) and neurturin (NTN) are two structurally related, potent neurotrophic factors that play key roles in the control of neuron survival and differentiation. This receptor is a glycosylphosphatidylinositol (GPI)-linked cell surface receptor for both GDNF and NTN, and mediates activation of the RET tyrosine kinase receptor. This gene is a candidate gene for Hirschsprung disease. Alternative splicing results in multiple transcript variants, at least one of which encodes a preproprotein that is proteolytically processed.

**Tag**      C-Fc

**Form**      Liquid

 Tel: 1-631-559-9269    1-516-512-3133

 Email: [info@creative-biomart.com](mailto:info@creative-biomart.com)     Fax: 1-631-938-8127

 45-1 Ramsey Road, Shirley, NY 11967, USA

<b>Bio-activity</b>	Measured by its binding ability in a functional ELISA with Human GDNF. The ED50 range $\leq 50$ ng/mL.
<b>Molecular Mass</b>	70.8 kDa
<b>AA Sequence</b>	<p>DRLDCVKASDQCLKEQSCSTKYRTLRLQCVAGKETNFSLASGLEAKDECRSAMEALK            QKSLYNCRCKRGMKKEKNCLRIYWSMYQSLQGNDLLEDSPYEPVNSRLSDIFRVVP            FISVEHIPKGNNCLDAAKACNLDDICKKYRSAYITPCTTSVSNVNCNRRKCHKALRQF            FDKVPAKHSYGMLFCSCRDIACRERRRQTIVPVCSYEEREKPNCLNLQDSCKTNYIC            RSRLADFFTNCPESRSVSSCLKENYADCLLAYSGLIGTVMTPNYIDSSSLVAPWC            DCSNSGNDLEECLKFLNFFKDNTCLKNAIQAFGNGSDVTVWQPAFPVQTTTATTTT            ALRVKNKPLGPAGSENEIPTHVLPCCANLQAQKLKSNVSGNTHLCISNGNYEKEGLG            ASS</p>
<b>Endotoxin</b>	< 1 EU/ $\mu$ g of protein (determined by LAL method)
<b>Purity</b>	> 90% by SDS-PAGE
<b>Applications</b>	SDS-PAGE, Bioactivity
<b>Notes</b>	For research use only. This product is not intended or approved for human, diagnostics or veterinary use.
<b>Storage</b>	Can be stored at +2 to +8 centigrade for 1 week. For long term storage, aliquot and store at -20 to -80 centigrade. Avoid repeated freezing and thawing cycles.
<b>Storage Buffer</b>	Phosphate-Buffered Saline (pH 7.4) containing 10% glycerol
<b>Concentration</b>	0.5 mg/mL (determined by absorbance at 280nm)

 Tel: 1-631-559-9269 1-516-512-3133

 Email: [info@creative-biomart.com](mailto:info@creative-biomart.com)  Fax: 1-631-938-8127

 45-1 Ramsey Road, Shirley, NY 11967, USA

**References**

1. Thompson, J. et al. (1998) Mol. Cell Neurosci. 11:117-126.
2. Baloh, R.H. et al. (1998) Proc. Natl. Acad. Sci. USA 95:5801-5806.
3. Jing S, et al. (1996). Cell. 85:1113-1124.
4. Treanor JJ, et al. (1996). 382: 80-83.
5. Jing S, et al. (1997). J Biol Chem. 272: 33111-33117.

## GENE INFORMATION

**Gene Name** [GFRA1 GDNF family receptor alpha 1 \[ Homo sapiens \(human\) \]](#)

**Official Symbol** [GFRA1](#)

**Synonyms**

GFRA1; GDNF family receptor alpha 1; GDNFR; RET1L; RETL1; RHDA4; TRNR1; GDNFRA; GFRalpha-1; GFR-ALPHA-1; GDNFR-alpha-1; GDNF family receptor alpha-1; GDNF receptor alpha 1d; GDNF receptor alpha 1e; GPI-linked anchor protein; Glial cell line-derived neurotrophic factor receptor alpha; PI-linked cell-surface accessory protein; RET ligand 1; TGF-beta-related neurotrophic factor receptor 1

**Gene ID** [2674](#)

**mRNA Refseq** [NM\\_145793](#)

**Protein Refseq** [NP\\_665736](#)

**MIM** [601496](#)

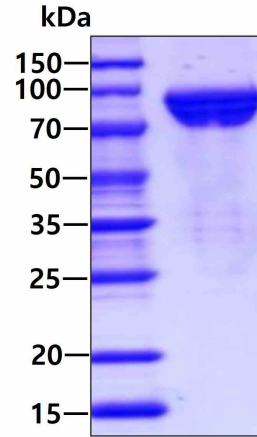
**UniProt ID** [P56159](#)

 Tel: 1-631-559-9269 1-516-512-3133


 Email: [info@creative-biomart.com](mailto:info@creative-biomart.com)  Fax: 1-631-938-8127

 45-1 Ramsey Road, Shirley, NY 11967, USA

**SDS-PAGE**



3  $\mu$ g by SDS-PAGE under reducing condition and visualized by coomassie blue stain.

 Tel: 1-631-559-9269 1-516-512-3133

 Email: [info@creative-biomart.com](mailto:info@creative-biomart.com)  Fax: 1-631-938-8127

 45-1 Ramsey Road, Shirley, NY 11967, USA