

Recombinant Human GFRA1 protein, His-tagged


Cat. No. GFRA1-11H Lot. No. (See product label)

SPECIFICATION

Product Overview	Recombinant Human GFRA1 protein(Asp25-Lys429), fused with His tag, was expressed in HEK293.
Species	Human
Source	HEK293
ProteinLength	Asp25-Lys429
Form	Lyophilized from a 0.2 µm filtered solution of 20mM PB, 150mM NaCl, pH 7.4.
Molecular Mass	60 Kda
Endotoxin	Less than 0.1 ng/g (1 EU/g) as determined by LAL test.
Purity	Greater than 95% as determined by reducing SDS-PAGE.
Storage	Lyophilized protein should be stored at ≤ -20°C, stable for one year after receipt. Reconstituted protein solution can be stored at 2-8°C for 2-7 days. Aliquots of reconstituted samples are stable at ≤ -20°C for 3 months.
Reconstitution	Always centrifuge tubes before opening. Do not mix by vortex or pipetting. It is not recommended to reconstitute to a concentration less than 100µg/ml. Dissolve the lyophilized protein in distilled water. Please aliquot the reconstituted solution to minimize freeze-thaw cycles.

 Tel: 1-631-559-9269 1-516-512-3133

 Email: info@creative-biomart.com  Fax: 1-631-938-8127

 45-1 Ramsey Road, Shirley, NY 11967, USA

GENE INFORMATION

Gene Name GFRA1 GDNF family receptor alpha 1 [Homo sapiens]

Official Symbol GFRA1

Synonyms GFRA1; GDNF family receptor alpha 1; GDNFRA; GDNF family receptor alpha-1; GDNFR; GFR ALPHA 1; RET1L; RETL1; TRNR1; RET ligand 1; GDNFR-alpha-1; GDNF receptor alpha-1; GPI-linked anchor protein; PI-linked cell-surface accessory protein; TGF-beta related neurotrophic factor receptor 1; TGF-beta-related neurotrophic factor receptor 1; Glial cell line-derived neurotrophic factor receptor alpha; GFR-ALPHA-1; FLJ10561; FLJ31546; MGC23045; DKFZp313E1012; DKFZp686J0156

Gene ID 2674

mRNA Refseq NM_001145453


Protein Refseq NP_001138925

MIM 601496

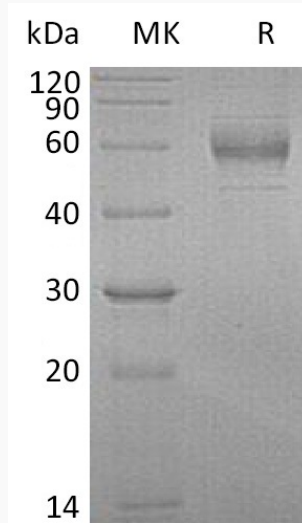
UniProt ID P56159


 Tel: 1-631-559-9269 1-516-512-3133

 Email: info@creative-biomart.com  Fax: 1-631-938-8127


 45-1 Ramsey Road, Shirley, NY 11967, USA

SDS-PAGE



 Tel: 1-631-559-9269 1-516-512-3133

 Email: info@creative-biomart.com  Fax: 1-631-938-8127

 45-1 Ramsey Road, Shirley, NY 11967, USA