

Recombinant Human GFRA1 Protein, Myc/DDK-tagged, C13 and N15-labeled

Cat. No. GFRA1-1312H Lot. No. (See product label)

SPECIFICATION

Product Overview

GFRA1 MS Standard C13 and N15-labeled recombinant protein (NP_001138925) with a C-terminal MYC/DDK tag, was expressed in HEK293 cells.

Species

Human

Source

HEK293

Description

This gene encodes a member of the glial cell line-derived neurotrophic factor receptor (GDNFR) family of proteins. The encoded preproprotein is proteolytically processed to generate the mature receptor. Glial cell line-derived neurotrophic factor (GDNF) and neurturin (NTN) are two structurally related, potent neurotrophic factors that play key roles in the control of neuron survival and differentiation. This receptor is a glycosylphosphatidylinositol (GPI)-linked cell surface receptor for both GDNF and NTN, and mediates activation of the RET tyrosine kinase receptor. This gene is a candidate gene for Hirschsprung disease. Alternative splicing results in multiple transcript variants, at least one of which encodes a preproprotein that is proteolytically processed.

Molecular Mass

50.84 kDa

AA Sequence

MFLATLYFALPLLDLLLSAEVSGGDRLCDVKASDQCLKEQSCSTKYRTLRLRQC VAGKE
TNFSLASGLEAKDECRSAMEALKQKSLYNCRCRGMKKEKNCLRIYWSMYQSLQG
NDLLEDSPYEPVNSRLSDIFRVVPFISVEHIPKGNNCLDAAKACNLDDICKKYRSAYIT

 Tel: 1-631-559-9269 1-516-512-3133

 Email: info@creative-biomart.com  Fax: 1-631-938-8127

 45-1 Ramsey Road, Shirley, NY 11967, USA

PCTTSVSNVDCNRRKCHKALRQFFDKVPAKHSYGMLFCSCRDIACRERRRQTIVPV
 CSYEEREKPNCLNLQDSCKTNYICRSRLADFFTNCPESRSVSSCLKENYADCLLAY
 SGLIGTVMTPNYIDSSSLSVAPWCDCSNSGNDLEECLKFLNFFKDNTCLKNAIQAFG
 NGSDVTWQPAFPVQTTTATTTALRVKNKPLGPAGSENEIPTHVLPCCANLQAQKL
 KSNVSGNTHLCISNGNYEKEGLGASSHITTKSMAAPPSCGLSPLLVLVVTALSTLLSL
 TETSTRTRPLEQKLISEEDLAANDILDYKDDDDKV

Purity > 80% as determined by SDS-PAGE and Coomassie blue staining

Stability Stable for 3 months from receipt of products under proper storage and handling conditions.

Storage Store at -80 centigrade. Avoid repeated freeze-thaw cycles.

Concentration 50 µg/mL as determined by BCA

Storage Buffer 100 mM glycine, 25 mM Tris-HCl, pH 7.3.

GENE INFORMATION

Gene Name [GFRA1 GDNF family receptor alpha 1 \[Homo sapiens \(human\) \]](#)

Official Symbol [GFRA1](#)

Synonyms GFRA1; GDNF family receptor alpha 1; GDNFRA; GDNF family receptor alpha-1; GDNFR; GFR ALPHA 1; RET1L; RETL1; TRNR1; RET ligand 1; GDNFR-alpha-1; GDNF receptor alpha-1; GPI-linked anchor protein; PI-linked cell-surface accessory protein; TGF-beta related neurotrophic factor receptor 1; TGF-beta-related neurotrophic factor receptor 1; Glial cell line-derived neurotrophic factor receptor alpha; GFR-ALPHA-1; FLJ10561; FLJ31546; MGC23045; DKFZp313E1012; DKFZp686J0156;

 Tel: 1-631-559-9269 1-516-512-3133

 Email: info@creative-biomart.com  Fax: 1-631-938-8127

 45-1 Ramsey Road, Shirley, NY 11967, USA

Gene ID 2674

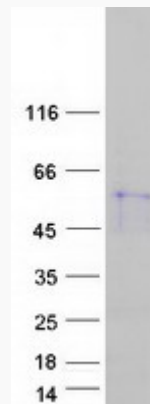
mRNA Refseq [NM_001145453](#)


Protein Refseq [NP_001138925](#)

MIM 601496

UniProt ID [P56159](#)

SDS-PAGE



 Tel: 1-631-559-9269 1-516-512-3133

 Email: info@creative-biomart.com  Fax: 1-631-938-8127

 45-1 Ramsey Road, Shirley, NY 11967, USA