

Active Recombinant Human GFRA1 protein, hFc&His-tagged

Cat. No. GFRA1-2633H Lot. No. (See product label)

SPECIFICATION

Product Overview	Recombinant Human GDNFR-alpha-1/GFRA1 Protein is produced by HEK293 expression system. The target protein is expressed with sequence (Ala19-Lys429) of human GFRA1/GFR α 1/GDNFRA (Accession #NP_665736) fused with an Fc, 6xHis tag at the C-terminus.
Species	Human
Source	HEK293
ProteinLength	Ala19-Lys429
Form	Lyophilized from a 0.22 μ m filtered solution of PBS, pH 7.4.
Bio-activity	Measured by its binding ability in a functional ELISA. Immobilized Human GDNF at 1 μ g/mL (100 μ L/well) can bind Human GFRA1 with a linear range of 2-332 ng/mL.
Molecular Mass	100 kDa
Endotoxin	< 1.0 EU/ μ g of the protein by LAL method.
Purity	> 80% by SDS-PAGE.
Storage	Store the lyophilized protein at -20°C to -80 °C for long term. After reconstitution, the protein solution is stable at -20 °C for 3 months, at 2-8 °C for up to 1 week.

 Tel: 1-631-559-9269 1-516-512-3133

 Email: info@creative-biomart.com  Fax: 1-631-938-8127

 45-1 Ramsey Road, Shirley, NY 11967, USA

Reconstitution Reconstitute to a concentration of 0.1-0.5 mg/mL in sterile distilled water.

GENE INFORMATION

Gene Name [GFRA1 GDNF family receptor alpha 1 \[Homo sapiens \]](#)

Official Symbol [GFRA1](#)

Synonyms

GFRA1; GDNF family receptor alpha 1; GDNFRA; GDNF family receptor alpha-1; GDNFR; GFR ALPHA 1; RET1L; RETL1; TRNR1; RET ligand 1; GDNFR-alpha-1; GDNF receptor alpha-1; GPI-linked anchor protein; PI-linked cell-surface accessory protein; TGF-beta related neurotrophic factor receptor 1; TGF-beta-related neurotrophic factor receptor 1; Glial cell line-derived neurotrophic factor receptor alpha; GFR-ALPHA-1; FLJ10561; FLJ31546; MGC23045; DKFZp313E1012; DKFZp686J0156;

Gene ID [2674](#)

mRNA Refseq [NM_001145453](#)

Protein Refseq [NP_001138925](#)

MIM [601496](#)

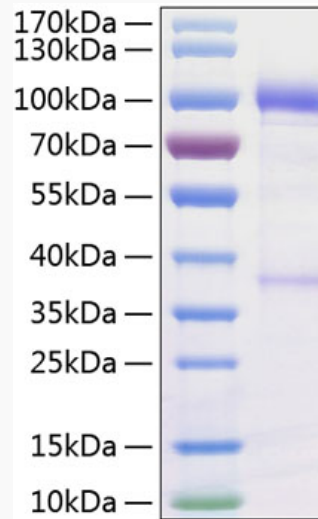
UniProt ID [P56159](#)

 Tel: 1-631-559-9269 1-516-512-3133

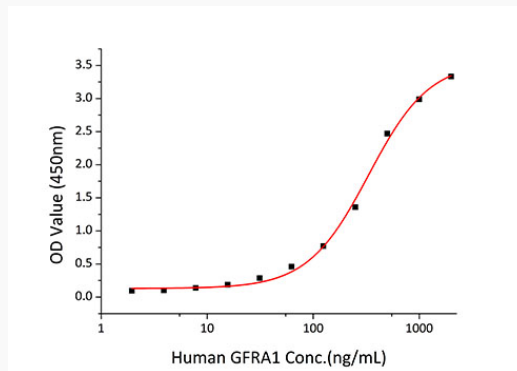
 Email: info@creative-biomart.com  Fax: 1-631-938-8127

 45-1 Ramsey Road, Shirley, NY 11967, USA

SDS-PAGE



Bio-activity



 Tel: 1-631-559-9269 1-516-512-3133

 Email: info@creative-biomart.com  Fax: 1-631-938-8127

 45-1 Ramsey Road, Shirley, NY 11967, USA