

Recombinant Human GFRA1 protein, His-tagged

Cat. No. GFRA1-3161H Lot. No. (See product label)

SPECIFICATION

Product Overview	Recombinant Human GFRA1 protein(NP_665736.1)(Asp25-Ser424), fused with C-terminal His tag, was expressed in HEK293.
Species	Human
Source	HEK293
ProteinLength	Asp25-Ser424
Tag	C-His
Form	Lyophilized from 0.22µm filtered solution in PBS (pH 7.4). Normally 8% trehalose is added as protectant before lyophilization.
Bio-activity	Immobilized Human GDNF, No Tag at 1 µg/ml (100µl/well) on the plate. Dose response curve for Human GFR alpha 1, His Tag with the EC50 of 3.8ng/ml determined by ELISA.
Molecular Mass	The protein has a predicted MW of 45.8 kDa. Due to glycosylation, the protein migrates to 50-70 kDa based on Tris-Bis PAGE result.
Endotoxin	Less than 1EU per µg by the LAL method.
Purity	> 95% as determined by Tris-Bis PAGE; > 95% as determined by HPLC

 Tel: 1-631-559-9269 1-516-512-3133

 Email: info@creative-biomart.com  Fax: 1-631-938-8127

 45-1 Ramsey Road, Shirley, NY 11967, USA

Storage Reconstituted protein stable at -80°C for 12 months, 4°C for 1 week. Use a manual defrost freezer and avoid repeated freeze-thaw cycles.

Reconstitution Centrifuge tubes before opening. Reconstituting to a concentration more than 100 µg/ml is recommended. Dissolve the lyophilized protein in distilled water.

GENE INFORMATION

Gene Name [GFRA1 GDNF family receptor alpha 1 \[Homo sapiens \]](#)

Official Symbol [GFRA1](#)

Synonyms GFRA1; GDNF family receptor alpha 1; GDNFRA; GDNF family receptor alpha-1; GDNFR; GFR ALPHA 1; RET1L; RETL1; TRNR1; RET ligand 1; GDNFR-alpha-1; GDNF receptor alpha-1; GPI-linked anchor protein; PI-linked cell-surface accessory protein; TGF-beta related neurotrophic factor receptor 1; TGF-beta-related neurotrophic factor receptor 1; Glial cell line-derived neurotrophic factor receptor alpha; GFR-ALPHA-1; FLJ10561; FLJ31546; MGC23045; DKFZp313E1012; DKFZp686J0156;

Gene ID [2674](#)

mRNA Refseq [NM_001145453](#)

Protein Refseq [NP_001138925](#)

MIM [601496](#)

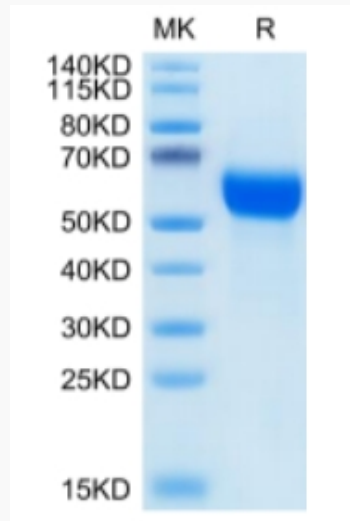
UniProt ID [P56159](#)

 Tel: 1-631-559-9269 1-516-512-3133

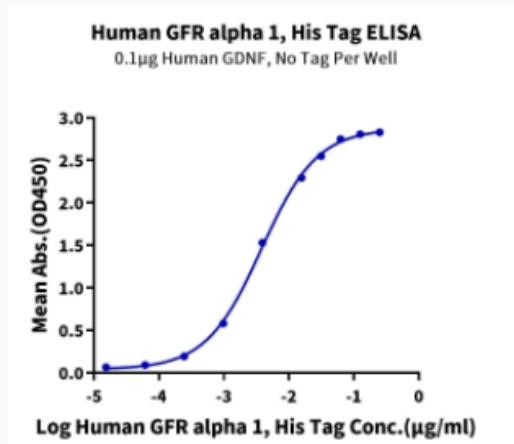
 Email: info@creative-biomart.com  Fax: 1-631-938-8127

 45-1 Ramsey Road, Shirley, NY 11967, USA

Tris-Bis PAGE



ELISA Data



 Tel: 1-631-559-9269 1-516-512-3133

 Email: info@creative-biomart.com  Fax: 1-631-938-8127

 45-1 Ramsey Road, Shirley, NY 11967, USA