

Recombinant Human GFRA2 Protein (Ser22-Ser441), C-His tagged

Cat. No. GFRA2-2814H Lot. No. (See product label)

SPECIFICATION

Product Overview	Recombinant human GFRA2 (Ser22-Ser441) protein fused with the C-terminal His tag was expressed in Mammalian cells.
Species	Human
Source	Mammalian Cells
ProteinLength	Ser22-Ser441
Molecular Mass	46.2 kDa
Purity	>90 % as determined by SDS-PAGE.
Notes	For research use only.
Storage	Use a manual defrost freezer and avoid repeated freeze thaw cycles. Store at 2 to 8 centigrade for one week. Store at -20 to -80 centigrade for twelve months from the date of receipt.
Storage Buffer	Supplied as solution form in PBS or lyophilized from PBS.
Reconstitution	Reconstitute in sterile water for a stock solution.
Shipping	In general, proteins are provided as lyophilized powder/frozen liquid. They are

 Tel: 1-631-559-9269 1-516-512-3133

 Email: info@creative-biomart.com  Fax: 1-631-938-8127

 45-1 Ramsey Road, Shirley, NY 11967, USA

shipped out with dry ice/blue ice unless customers require otherwise.

GENE INFORMATION

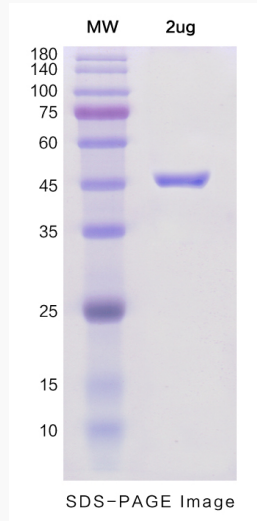
Gene Name	GFRA2 GDNF family receptor alpha 2 [Homo sapiens (human)]
Official Symbol	GFRA2
Synonyms	GFRA2; GDNF family receptor alpha 2; GDNF family receptor alpha-2; GDNFRB; NTNRA; RETL2; TRNR2; GDNFR-beta; NTN-alpha; GFR-alpha 2; RET ligand 2; GDNFR-alpha-2; GDNF receptor beta; neurturin receptor alpha; TRN receptor, GPI-anchored; PI-linked cell-surface accessory protein; TGF-beta-related neurotrophic factor receptor 2; glial cell line derived neurotrophic factor receptor, beta; NRTNR-ALPHA;
Gene ID	2675
mRNA Refseq	NM_001165038
Protein Refseq	NP_001158510
MIM	601956
UniProt ID	O00451

 Tel: 1-631-559-9269 1-516-512-3133

 Email: info@creative-biomart.com  Fax: 1-631-938-8127

 45-1 Ramsey Road, Shirley, NY 11967, USA

SDS-PAGE



 Tel: 1-631-559-9269 1-516-512-3133

 Email: info@creative-biomart.com  Fax: 1-631-938-8127

 45-1 Ramsey Road, Shirley, NY 11967, USA