

Recombinant Human GFRA2 protein, His-tagged

Cat. No. GFRA2-3162H Lot. No. (See product label)

SPECIFICATION

Product Overview Recombinant Human GFRA2 (Ser22-Ser441) protein was fused to His-tag at C-terminus and expressed in human 293 cells (HEK293).

Species Human

Source HEK293

ProteinLength Ser22-Ser441

Description

GDNF family receptor alpha-2 (GFRA2) is also known as GDNF receptor beta, Neurturin receptor alpha, RET ligand 2, TGF-beta-related neurotrophic factor receptor 2, is a cell membrane protein which belongs to the GDNFR family. Glial cell line-derived neurotrophic factor (GDNF) and neurturin (NTN) are two structurally related, potent neurotrophic factors that play key roles in the control of neuron survival and differentiation. GDNF is a glycosylated, disulfide-bonded homodimer that is distantly related to the TGF-beta superfamily of growth factors. Three receptors for these factors, GFR α -1, GFR α -2 and GFR α -3 have been identified. The isoform 1 of GFRA2 is found in both brain and placenta. GFRA2 mediates the NRTN-induced autophosphorylation and activation of the RET receptor and also able to mediate GDNF signaling through the RET tyrosine kinase receptor. GFRA2 mediates the NRTN-induced autophosphorylation and activation of the RET receptor. It can also mediate GDNF signaling through the RET tyrosine kinase receptor.

Predicted N Terminal Ser22

 Tel: 1-631-559-9269 1-516-512-3133

 Email: info@creative-biomart.com  Fax: 1-631-938-8127

 45-1 Ramsey Road, Shirley, NY 11967, USA

Form	Lyophilized from 0.22 µm filtered solution in PBS, pH7.4, 10% trehalose.
Molecular Mass	The protein has a calculated MW of 47.6 kDa. The protein migrates as 60-70 KDa under reducing (R) condition (SDS-PAGE) due to glycosylation.
Endotoxin	Less than 1.0 EU per µg by the LAL method.
Purity	>97% as determined by SDS-PAGE.
Storage	For long term storage, the product should be stored at lyophilized state at -20 centigrade or lower. Please avoid repeated freeze-thaw cycles. This product is stable after storage at: -20 to -70 centigrade for 12 months in lyophilized state; -70 centigrade for 3 months under sterile conditions after reconstitution.
Reconstitution	It is recommended that sterile water be added to the vial to prepare a stock solution of 0.2 ug/ul. Centrifuge the vial at 4°C before opening to recover the entire contents.

GENE INFORMATION

Gene Name	GFRA2
Official Symbol	GFRA2
Synonyms	GFRA2; GDNF family receptor alpha 2; GDNF family receptor alpha-2; GDNFRB; NTNRA; RETL2; TRNR2; GDNFR-beta; NTNR-alpha; GFR-alpha 2; RET ligand 2; GDNFR-alpha-2; GDNF receptor beta; neurturin receptor alpha; TRN receptor, GPI-anchored; PI-linked cell-surface accessory protein; TGF-beta-related neurotrophic factor receptor 2; glial cell line derived neurotrophic factor receptor, beta; NRTNR-ALPHA

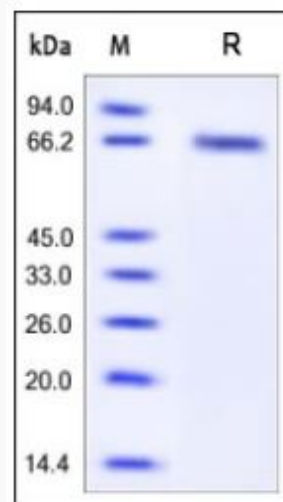
 Tel: 1-631-559-9269 1-516-512-3133

 Email: info@creative-biomart.com  Fax: 1-631-938-8127

 45-1 Ramsey Road, Shirley, NY 11967, USA

Gene ID	2675
mRNA Refseq	NM_001165038
Protein Refseq	NP_001158510
MIM	601956
UniProt ID	O00451

**SDS-PAGE of
GFRA2-3162H**



Human GFR alpha-2, His Tag on SDS-PAGE under reducing (R) condition. The gel was stained overnight with Coomassie Blue. The purity of the protein is greater than 97%.

Tel: 1-631-559-9269 1-516-512-3133

Email: info@creative-biomart.com Fax: 1-631-938-8127

45-1 Ramsey Road, Shirley, NY 11967, USA