

## Recombinant Human GFRAL protein, His-tagged

Cat. No. GFRAL-002H Lot. No. (See product label)

### SPECIFICATION

<b>Product Overview</b>	Recombinant Human GFRAL protein (Ser19-Glu351) was fused to His-tag at C-terminus and expressed in human 293 cells (HEK293).
<b>Species</b>	Human
<b>Source</b>	HEK293
<b>ProteinLength</b>	333
<b>Description</b>	Brainstem-restricted receptor for GDF15 which regulates food intake, energy expenditure and body weight in response to metabolic and toxin-induced stresses. Upon interaction with its ligand, GDF15, interacts with RET and induces cellular signaling through activation of MAPK- and AKT- signaling pathways.
<b>Molecular Mass</b>	The predicted molecular mass is 38 kDa, and the actual MW is about 40 kDa in SDS-PAGE under reducing conditions.
<b>Endotoxin</b>	<1 EU/mg as determined by LAL test.
<b>Purity</b>	80%by SDS-PAGE under reducing conditions.

### GENE INFORMATION

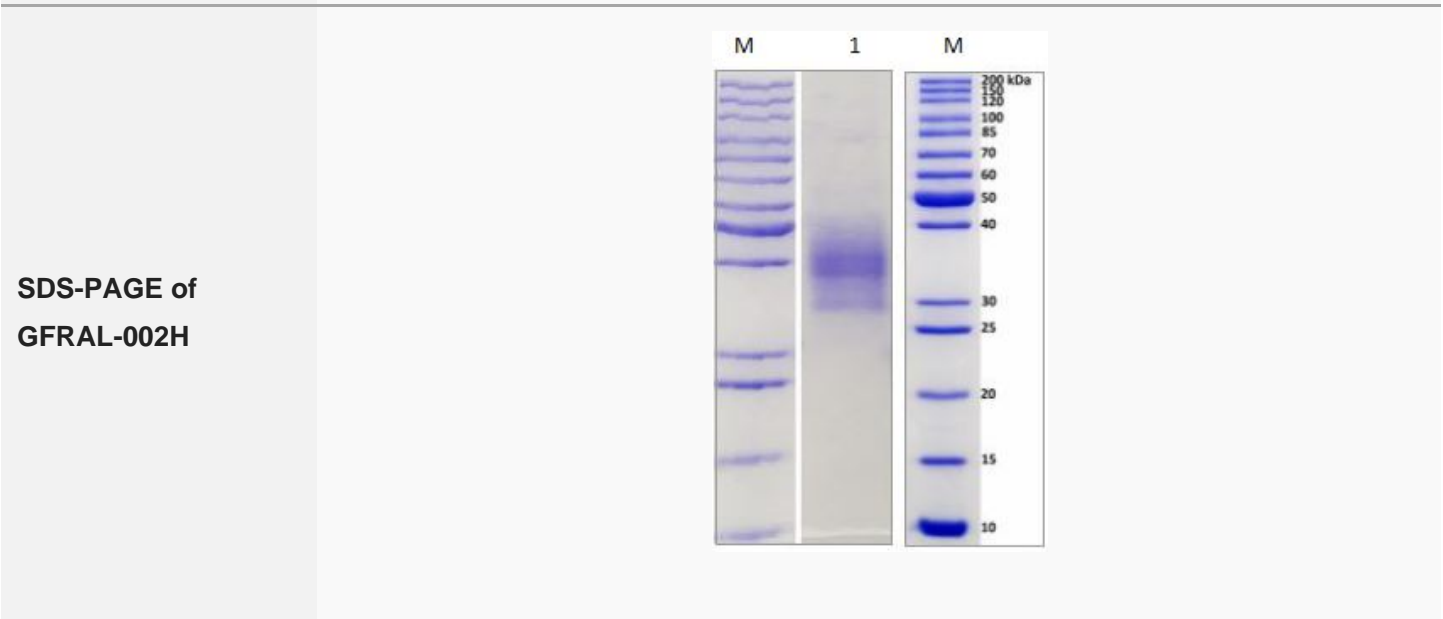
**Gene Name** GFRAL

 Tel: 1-631-559-9269 1-516-512-3133

 Email: [info@creative-biomart.com](mailto:info@creative-biomart.com)  Fax: 1-631-938-8127

 45-1 Ramsey Road, Shirley, NY 11967, USA

<b>Official Symbol</b>	GFRAL
<b>Synonyms</b>	GRAL; UNQ9356; C6orf144; bA360D14.1
<b>Gene ID</b>	389400
<b>mRNA Refseq</b>	NM_207410.2
<b>Protein Refseq</b>	NP_997293.2
<b>MIM</b>	617837
<b>UniProt ID</b>	Q6UXV0



Tel: 1-631-559-9269 1-516-512-3133

Email: [info@creative-biomart.com](mailto:info@creative-biomart.com) Fax: 1-631-938-8127

45-1 Ramsey Road, Shirley, NY 11967, USA