

# Recombinant Human GFRAL Protein, Ser19-Glu351, C-His-Avi tagged, Biotinylated

Cat. No. GFRAL-103H Lot. No. (See product label)

## SPECIFICATION

<b>Product Overview</b>	Recombinant human GFRAL/GFR alpha-like-C-His-Avi protein was developed from HEK293 and has a target region of C-His-Avi.
<b>Species</b>	Human
<b>Source</b>	HEK293
<b>ProteinLength</b>	Ser19-Glu351
<b>Description</b>	Enables glial cell-derived neurotrophic factor receptor activity and receptor tyrosine kinase binding activity. Involved in glial cell-derived neurotrophic factor receptor signaling pathway; positive regulation of MAPK cascade; and positive regulation of protein kinase B signaling. Located in external side of plasma membrane.
<b>Conjugation/Label</b>	Biotin
<b>Form</b>	Lyophilised
<b>Endotoxin</b>	Endotoxin level was found to be less than 0.1 ng/μg (1 EU/μg).
<b>Notes</b>	FOR RESEARCH USE ONLY (RUO).
<b>Storage</b>	The lyophilized protein is stable for at least 1 year from date of receipt at -20 centigrade.

 Tel: 1-631-559-9269 1-516-512-3133

 Email: [info@creative-biomart.com](mailto:info@creative-biomart.com)  Fax: 1-631-938-8127

 45-1 Ramsey Road, Shirley, NY 11967, USA

<b>Storage Buffer</b>	Lyophilised from 0.2 µm filtered PBS solution pH 7.4. Upon receipt centrifuge vial to ensure maximal product extraction, recommended: 20 sec, 5K RPM
-----------------------	--

<b>Conjugation</b>	Biotin
--------------------	--------

## GENE INFORMATION

<b>Gene Name</b>	GFRAL GDNF family receptor alpha like [ Homo sapiens (human) ]
------------------	--

<b>Official Symbol</b>	GFRAL
------------------------	-------

<b>Synonyms</b>	GFRAL; GDNF family receptor alpha like; C6orf144, chromosome 6 open reading frame 144; GDNF family receptor alpha-like; bA360D14.1; GRAL; UNQ9356; IVFI9356; C6orf144;
-----------------	--

<b>Gene ID</b>	389400
----------------	--------

<b>mRNA Refseq</b>	NM_207410
--------------------	-----------

<b>Protein Refseq</b>	NP_997293
-----------------------	-----------

<b>MIM</b>	617837
------------	--------

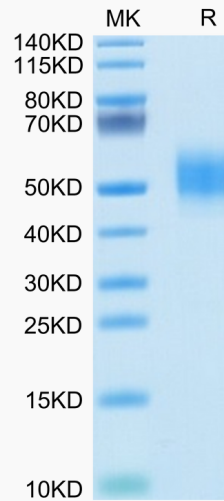
<b>UniProt ID</b>	Q6UXV0
-------------------	--------

 Tel: 1-631-559-9269 1-516-512-3133

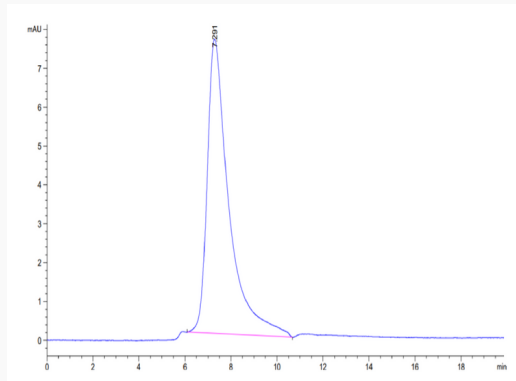
 Email: [info@creative-biomart.com](mailto:info@creative-biomart.com)  Fax: 1-631-938-8127

 45-1 Ramsey Road, Shirley, NY 11967, USA

**Biotinylated Human GFRAL on Tris-Bis PAGE under reduced conditions. The purity is greater than 95%.**



**The purity of Biotinylated Human GFRAL is greater than 95% as determined by SEC-HPLC.**



**Immobilized Human GDF15, His Tag at 1 µg/mL (100 µL/Well) on the plate. Dose response curve for Biotinylated Human GFRAL, His Tag with**

Tel: 1-631-559-9269 1-516-512-3133

Email: [info@creative-biomart.com](mailto:info@creative-biomart.com) Fax: 1-631-938-8127

45-1 Ramsey Road, Shirley, NY 11967, USA



the EC50 of 0.1  
µg/mL determined by  
ELISA.

Serial dilutions of  
Anti-GDF15 Antibody  
were added into  
Human GDF15, His  
Tag: Biotinylated  
Human GFRAL, His  
Tag binding  
reactions. The half  
maximal inhibitory  
concentration (IC50)  
is 40.8 ng/mL.

 Tel: 1-631-559-9269 1-516-512-3133

 Email: [info@creative-biomart.com](mailto:info@creative-biomart.com)  Fax: 1-631-938-8127

 45-1 Ramsey Road, Shirley, NY 11967, USA