

# Recombinant Human GFRAL Protein (19-351 aa), His-SUMO-tagged

Cat. No. GFRAL-1929H Lot. No. (See product label)

## SPECIFICATION

<b>Product Overview</b>	Recombinant Human GFRAL Protein (19-351 aa) is produced by E. coli expression system. This protein is fused with a 6xHis-SUMO tag at the N-terminal. Research Area: Cell Biology. Protein Description: Partial.
<b>Species</b>	Human
<b>Source</b>	E.coli
<b>ProteinLength</b>	19-351 aa
<b>Form</b>	Tris-based buffer,50% glycerol
<b>Molecular Mass</b>	53.8 kDa
<b>AA Sequence</b>	SQTNNCTYLREQCLRDANGCKHAWRVMEDACNDSDPGDPCKMRNSSYCNLSIQY LVESNFQFKECLCTDDFYCTVNKLLGKKCINKSDNVKEDKFKWNLTRSHHGFKGM WSCLEVAEACVGDVVCNAQLASYLKACSANGNPCDLKQCQAAIRFFYQNIPFNIAQ MLAFCDCAQSDIPCQQSKEALHSKTCAVNMVPPPTCLSVIRSCQNDELRRHYRTF QSKCWQRVTRKCHEDENCISTLSKQDLTCSGSDDCKAAYIDILGTVLQVQCTCRTIT QSEESLCKIFQHMLHRKSCFNYP TLSNVKGMALYTRKHANKITLTGFHSPFNGE
<b>Purity</b>	> 90% as determined by SDS-PAGE.
<b>Notes</b>	Repeated freezing and thawing is not recommended. Store working aliquots at 4

 Tel: 1-631-559-9269 1-516-512-3133

 Email: [info@creative-biomart.com](mailto:info@creative-biomart.com)  Fax: 1-631-938-8127

 45-1 Ramsey Road, Shirley, NY 11967, USA

centigrade for up to one week.

**Storage**

The shelf life is related to many factors, storage state, buffer ingredients, storage temperature and the stability of the protein itself. Generally, the shelf life of liquid form is 6 months at -20 centigrade/-80 centigrade. The shelf life of lyophilized form is 12 months at -20 centigrade/-80 centigrade.

**Concentration**

A hardcopy of COA with reconstitution instruction is sent along with the products.

## GENE INFORMATION

**Gene Name**

GFRAL GDNF family receptor alpha like [ Homo sapiens ]

**Official Symbol**

GFRAL

**Synonyms**

GFRAL; bA360D14.1; GRAL; UNQ9356; IVFI9356; C6orf144;

**Gene ID**

389400

**mRNA Refseq**

NM\_207410

**Protein Refseq**

NP\_997293

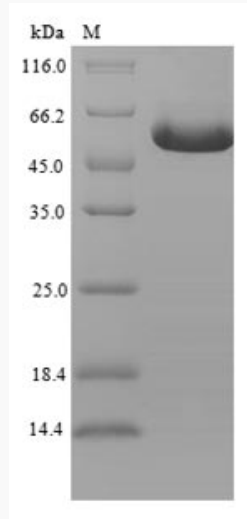
**UniProt ID**

Q6UXV0

 Tel: 1-631-559-9269 1-516-512-3133

 Email: [info@creative-biomart.com](mailto:info@creative-biomart.com)  Fax: 1-631-938-8127

 45-1 Ramsey Road, Shirley, NY 11967, USA



(Tris-Glycine gel) Discontinuous SDS-PAGE (reduced) with 5% enrichment gel and 15% separation gel.

 Tel: 1-631-559-9269 1-516-512-3133

 Email: [info@creative-biomart.com](mailto:info@creative-biomart.com)  Fax: 1-631-938-8127

 45-1 Ramsey Road, Shirley, NY 11967, USA