

## Recombinant Human GFRAL protein, His-Avi-tagged

Cat. No. GFRAL-60H Lot. No. (See product label)

### SPECIFICATION

<b>Product Overview</b>	Human LILRA3 Protein is expressed from mammalian with His and Avi Tag at the C-terminal. It contains Gly24-Glu439.
<b>Species</b>	Human
<b>Source</b>	HEK293
<b>ProteinLength</b>	Gly24-Glu439
<b>Description</b>	GFR alpha-like (GDNF receptor-alpha-like) is a distant member of the GDNFR family of proteins. Mature human GFR alpha-like is a 376 amino acid (aa) type I transmembrane protein. It contains a 333 aa extracellular domain, a 20 aa transmembrane domain and a 23 aa cytoplasmic domain. GFRAL is a brainstem-restricted receptor for GDF15 which regulates food intake, energy expenditure and body weight in response to metabolic and toxin-induced stresses.
<b>Form</b>	Supplied as 0.22um filtered solution in 20mM PB, 300mM NaCl (pH 6.5).
<b>Molecular Mass</b>	The protein has a predicted MW of 40.7 kDa. Due to glycosylation, the protein migrates to 48-62kDa based on Bis-Tris PAGE result.
<b>Endotoxin</b>	Less than 0.1EU per ug by the LAL method.
<b>Purity</b>	> 95% as determined by Tris-Bis PAGE; > 95% as determined by HPLC

 Tel: 1-631-559-9269 1-516-512-3133

 Email: [info@creative-biomart.com](mailto:info@creative-biomart.com)  Fax: 1-631-938-8127

 45-1 Ramsey Road, Shirley, NY 11967, USA

**Storage** The product should be stored at -70°C. Please do not repeated freeze-thaw cycles.

**Reconstitution** It is recommended that sterile water be added to the vial to prepare a stock solution of 0.2 ug/ul. Centrifuge the vial at 4°C before opening to recover the entire contents.

## GENE INFORMATION

**Gene Name** [GFRAL GDNF family receptor alpha like \[ Homo sapiens \]](#)

**Official Symbol** [GFRAL](#)

**Synonyms** GFR alpha like; GFR alpha-like; GFRAL; GRAL; GDNF family receptor alpha-lik; C6orf144

**Gene ID** [389400](#)

**mRNA Refseq** [NM\\_207410.2](#)

**Protein Refseq** [NP\\_997293.2](#)

**MIM** [617837](#)

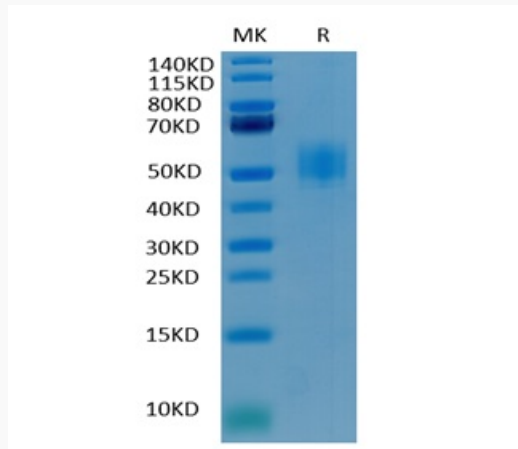
**UniProt ID** [Q6UXV0](#)

 Tel: 1-631-559-9269 1-516-512-3133

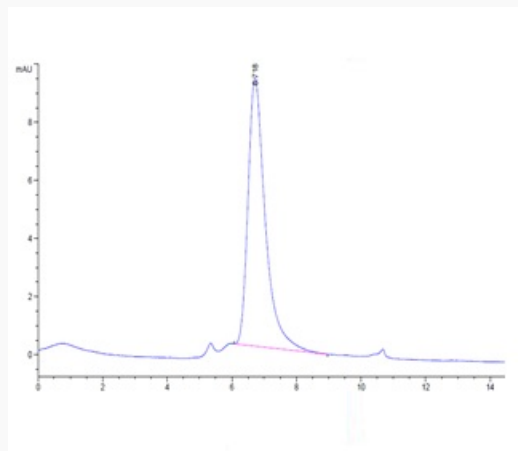
 Email: [info@creative-biomart.com](mailto:info@creative-biomart.com)  Fax: 1-631-938-8127

 45-1 Ramsey Road, Shirley, NY 11967, USA

**Tris-Bis PAGE**



**SEC-HPLC**

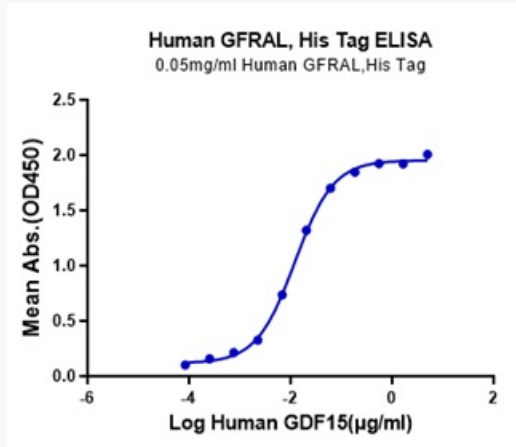


 Tel: 1-631-559-9269 1-516-512-3133

 Email: [info@creative-biomart.com](mailto:info@creative-biomart.com)  Fax: 1-631-938-8127

 45-1 Ramsey Road, Shirley, NY 11967, USA

ELISA data



 Tel: 1-631-559-9269 1-516-512-3133

 Email: [info@creative-biomart.com](mailto:info@creative-biomart.com)  Fax: 1-631-938-8127

 45-1 Ramsey Road, Shirley, NY 11967, USA